

Navajo Preparatory School is recognized as an International Baccalaureate (IB) World School offering a Diploma Programme and Course Certificate Programme. The IB offers high quality programmes of international education to a worldwide community of schools to develop inquiring, knowledgeable and caring young people who help to create a better and more peaceful world through intercultural understanding and respect.

For further information about the IB Programme visit <http://www.ibo.org>.

BOARD OF TRUSTEES

Anderson Yazzie, Jr.

Central & Western Navajo Agencies

Sherrick Roanhorse

Ft. Defiance Navajo Agency

Charley Long, Sr.

Eastern Navajo Agency

Matthew Tso

Shiprock Agency

Logan Reano

Student Senate (Ad-Hoc Member)

Based on Title VI and VII of the Civil Rights Act of 1964, the Navajo Preparatory School, Inc. prohibits any type of discrimination or harassment on the basis of race, color, national origin, sexual orientation, disability, religious persuasion or age. 504 of the Rehabilitation Act of 1973 and Title II prohibit discrimination on the basis of disability.

Accredited By

AdvancED/North Central Association
New Mexico Public Education Department

Navajo Preparatory School, Inc.

1220 West Apache Street
Farmington, New Mexico 87401
Tel: (505) 326-6571
Fax: (505) 564-8099
www.navajoprep.com

Board Approved: June 25, 2018

NPS Board of Trustees reserves the right to revise Community Handbook in the best interest of students without notice. This handbook is periodically reviewed and approved by NPS Board of Trustees, administration and PAC to ensure the policies and procedures do not compromise the right of each individual student.

WELCOME	6
HISTORY.....	6
SCHOOL GOVERNANCE	6
MISSION STATEMENT.....	6
SCHOOL SYMBOLS	7
POSITIVE SCHOOL CLIMATE.....	9
<i>Social Environment</i>	9
CODE OF CONDUCT	10
FACULTY	11
STAFF DIRECTORY	12
ADMINISTRATIVE OFFICES	13
OFFICE OF THE HEAD OF SCHOOL.....	13
OFFICE OF BUSINESS & FINANCE.....	13
<i>Student Fees</i>	13
<i>Payment of Fees</i>	13
<i>Payment Plan</i>	13
<i>Late Fees</i>	13
<i>Dishonored Payments</i>	13
OFFICE OF THE DEAN OF INSTRUCTION.....	14
OFFICE OF THE DEAN OF STUDENT AFFAIRS	14
OFFICE OF THE DEAN OF RESIDENTIAL STUDENT LIFE.....	14
OFFICE OF IB DIPLOMA PROGRAMME	14
OFFICE OF ADMISSIONS	14
INFORMATION TECHNOLOGY.....	14
FACILITIES MANAGEMENT AND TRANSPORTATION	14
CAMPUS SECURITY	14
STUDENT RIGHTS & RESPONSIBILITIES	15
<i>Student Rights</i>	15
<i>Student Responsibilities</i>	15
PARENT/GUARDIAN RIGHTS & RESPONSIBILITIES	16
<i>Parent/Guardian Rights</i>	16
<i>Parent/Guardian Responsibilities</i>	16
PARENT/GUARDIAN ORGANIZATIONS.....	17
<i>Parent Advisory Council (PAC)</i>	17
<i>Indian Education Committee (IEC)</i>	17
PARENT/GUARDIAN AND SCHOOL COMPACT	17
<i>School Responsibilities</i>	17
PARENT/GUARDIAN CONCERN PROCESS	18
ACADEMIC PROGRAM	19
PROGRAM OF STUDY.....	19
<i>IB Diploma Programme</i>	19
<i>IB Admission Requirements</i>	19
<i>Diploma Pathways</i>	19

<i>Dual Credit College Courses</i>	20
GRADUATION REQUIREMENTS	21
<i>College Preparation Expectations</i>	21
<i>Graduation Requirements</i>	21
ATSÁ EXHIBITION	21
<i>Valedictorian, Salutatorian & IB Diploma Candidates</i>	22
TRANSFER STUDENTS	22
ASSESSMENT & EVALUATION	22
<i>Assessment Policy</i>	22
<i>Purpose of Assessment</i>	22
<i>Principles of Assessment</i>	22
<i>Assessment Practices</i>	23
GRADE REPORTS	23
DEAN'S LIST & HONOR ROLL	23
COLLEGE PREP ADVISORY.....	23
ACADEMIC GUIDELINES.....	24
ATTENDANCE	24
<i>Absences</i>	24
<i>Excused Absences</i>	24
<i>Unexcused Absences</i>	24
<i>Cumulative Absences</i>	24
<i>Attendance Committee</i>	24
<i>Consecutive Absences</i>	25
<i>Tardy Policy</i>	25
STUDENT, PARENT AND GUARDIAN ROLE FOR ABSENCES AND TARDIES	25
INTEGRITY.....	26
<i>Academic Honesty</i>	26
<i>Cheating</i>	26
<i>Plagiarism</i>	26
<i>Consequences</i>	26
HOMEWORK EXPECTATIONS	27
SCHOLASTIC ACTION	27
<i>Academic Study Hall</i>	27
<i>Academic At-Risk</i>	27
<i>Four Levels of Scholastic Action</i>	27
DRESS EXPECTATIONS	28
<i>Class Dress</i>	28
<i>Formal Dress</i>	28
<i>Casual Dress</i>	29
STUDENT RESOURCES & SERVICES	30
ACADEMIC COUNSELING	30
REGISTRAR SERVICES	30
<i>Transcript Requests</i>	30
<i>Incompletes</i>	30
<i>Term Checkout Procedure</i>	30
<i>Year-End Early Release</i>	30
<i>Withdrawal from School</i>	30

<i>Student Sign-In/Sign-Out</i>	30
MCKENZIE SCHOOL BASED HEALTH CENTER	31
<i>Professional Staff</i>	31
<i>Medications</i>	31
<i>How to Contact Us</i>	32
<i>Locations and Operations</i>	32
<i>Urgent/Emergent Health Referrals</i>	32
<i>Routine Health Appointments</i>	32
<i>Counseling & Mental Health Referral</i>	33
LIBRARY MEDIA SERVICES	33
<i>School Library</i>	33
<i>Library Hours</i>	33
<i>Library Overdue Policy</i>	33
TECHNOLOGY SERVICES	33
ACCEPTABLE COMPUTER USE POLICY	33
<i>Educational Purposes</i>	33
<i>Network Drives</i>	33
<i>Internet and Email</i>	34
<i>Wireless Communication Devices</i>	34
<i>Privileges</i>	34
<i>Security</i>	35
<i>Internet/Intranet Abuse and Vandalism</i>	35
<i>Disclaimer</i>	35
<i>NPS Child Internet Protection Act – Compliant Internet Safety Policy</i>	35
DINING SERVICES	36
<i>Dining Hours</i>	36
TRANSPORTATION SERVICES	36
OTHER STUDENT SUPPORT SERVICES	37
SPECIAL EDUCATION SERVICES/CHILD FIND	37
GIFTED & TALENTED PROGRAM	37
SECTION 504	38
FLEX TIME	38
ACADEMY	38
<i>Freshmen Academy</i>	38
<i>Sophomore Academy</i>	38
<i>Junior Academy</i>	39
TUTORING SERVICES	39
<i>Tutoring Schedule</i>	39
SUMMER ENRICHMENT ACTIVITIES	39
ATHLETIC PROGRAM	40
ATHLETIC/INTERSCHOLASTIC PROGRAM	40
PHILOSOPHY	40
ATHLETIC GUIDELINES	40
<i>Academic Eligibility Requirements</i>	40
<i>Physical Examination</i>	40
<i>Attendance</i>	41
<i>Loss of Interscholastic Athletic Eligibility</i>	41

<i>Sport Changes</i>	41
STUDENT LEADERSHIP	42
STUDENT COUNCIL GOVERNMENT.....	42
STUDENT CLUBS AND ORGANIZATIONS	42
NATIONAL HONOR SOCIETY	42
NATURAL HELPERS.....	42
NAVAJO PREPARATORY SCHOOL ROYALTY.....	42
COMMUNITY LIVING	43
STUDENT EXPECTATIONS	43
<i>Personal Property</i>	43
<i>Student ID's</i>	43
<i>Lost and Found</i>	43
<i>School Property</i>	43
<i>Assemblies</i>	43
SCHOOL SAFETY & SECURITY.....	43
<i>School Resource Officer</i>	43
BEFORE/AFTER SCHOOL ACTIVITIES.....	45
<i>Afterschool Activities</i>	45
COMMUTER (DAY) STUDENT LIFE	45
RESIDENTIAL LIFE PROGRAM	46
RESIDENTIAL GUIDELINES.....	47
<i>Supplements</i>	49
DISCIPLINARY GUIDELINES	50
<i>Suspension</i>	51
<i>Defiance / Insubordination / Profanity</i>	52
<i>Forms of Bullying</i>	53
<i>Examples of different types of harassment</i>	53
MAJOR POLICY VIOLATION CONSEQUENCES	54
DISCIPLINE PROCEDURES & PROCESSES FOR MAJOR VIOLATIONS	56
<i>Procedures for Dismissal:</i>	58
APPENDIX	59
2018-19 ACADEMIC YEAR CALENDAR	59
REGULAR DAILY SCHEDULE	60
2 HOUR DELAY SCHEDULE.....	61
MID-TERM AND FINAL SCHEDULES (DEC)	61
FINAL EXAMINATION SCHEDULES	61
BEFORE AND AFTER SCHOOL SCHEDULES	62
TRANSPORTATION SCHEDULES	62
<i>Daily Route Schedules</i>	62
<i>Shiprock Route</i>	62
<i>Bloomfield/Aztec Route, if needed</i>	62
<i>1/2 Day School Schedule</i>	64
NOTES	65
CAMPUS MAP	66

WELCOME

Welcome to Navajo Preparatory School – A community of excellence! We are very proud that you have chosen to attend one of the best schools in the area.

Our primary responsibility is student learning and we will make every effort to give you the opportunity to grow to your maximum potential. Our philosophy is based on the premise that knowledge in Navajo culture and language provide the foundation for students to develop pride in themselves and their future success. Our responsibility is supported by our school mission statement and school motto, “Yideeskâągóó Naat’áanii – Leaders Now and Into the Future”.

As an International Baccalaureate (IB) World School, we aim to develop inquiring, knowledgeable, and caring young people who help to create a better and more peaceful world through intercultural understanding and respect. Our IB Learner Profile defines the portrait of an ideal NPS graduate.

Please use this Community Handbook as a guide. It has a set of standards to help you be successful in your high school career and pursue your dreams. Navajo Prep School is a learning community that focuses on student achievement, high expectations, good citizenship, integrity and life-long learning. We offer a rigorous academic curriculum with an inviting school culture that promotes school pride as “Eagles.” We have a long tradition of excellence in academics, interscholastic and extra-curricular activities. So come prepared to work hard every day, give your best effort, have fun and soar high like an Eagle. We are happy to have you!

HISTORY

Navajo Preparatory School, Inc. was established in 1991 by the Education Committee of the Navajo Nation Council (Resolution ECMY-33-91) for the purpose of offering a college preparatory program for Native high school students and to produce leaders for the Navajo Nation. Navajo Prep School is located in Farmington, New Mexico on an 82.45-acre site formerly the campus of the Navajo Methodist Mission School. The land and property were purchased by the Navajo Nation in 1995 and is now the permanent home of Navajo Prep School under a 99-year lease with the Navajo Nation.

SCHOOL GOVERNANCE

Bik’ehgo hoot’áál

The school is governed by a four (4) member Board of Trustees in accordance with the Navajo Nation Election Laws, 11 N.N.C., Section 11. Four members of the Board are elected from various chapters of the Navajo Nation based on the reapportionment made by the Education Committee of the Navajo Nation Council. The President of the Student Senate of the Navajo Preparatory School serves as an Ad Hoc member.

The **Board of Trustees** provides leadership for the continual improvement of a college preparatory educational program that is comprehensive, accessible, responsive, relevant, and efficient. This includes the development and implementation of an administrative organizational structure that facilitates the educational process through effective management and leadership. The Board takes leadership for modernizing existing school buildings and construction of new educational facilities that are conducive to student learning and safety.

MISSION STATEMENT

To develop inquisitive, compassionate life-long learners and leaders through a challenging curriculum of international education and assessment.

To promote a strong foundation of Navajo Philosophy and holistic world view that fosters intercultural understanding and respect in a global society.

The mission is reflected in the IB Learner Profile and the School’s motto:

Upon its conception, Navajo Preparatory School established its foundation with the school symbols. The symbols represent the school's tradition and growth. These school symbols are used at school-wide activities and in school communications and logos.

The **hooghan nímazí** was dedicated on September 19, 2001. The female Hogan is the first construction of the campus development plans.

Hooghan (*female hogan*): the **hooghan nímazí** represents the mother and is the center of the academic campus. The female Hogan is the place where all knowledge originates and where wisdom is learned. The female hogan symbolizes an individual's strength, courage and faith.

Ts'aa' (*basket*): the **ts'aa'** recounts the stories of creation and emergence into this fourth world. The basket reinforces the Diné notion of **Sa'ah Naaghái Bik'eh Hózhqon**, when all of life is in equilibrium. The basket radiates **ííná**, the study of learning and living.

Tádídíín (*corn pollen*): **Tádídíín** represents positive feelings of thought. Corn pollen nurtures the mental and emotional growth of the individual.

Naadáá' áitsoi (*yellow corn*): **Naadáá' áitsoi** represents the female and female learning. Yellow corn embodies the spirit of the emotional being, the energy of happiness, and courage.

Naadáá' átgaii (*white corn*): **Naadáá' átgaii** represents the male and male learning. White corn embodies the spirit of the mental being, kindness, thoughtfulness, and strength.

Naadáá'ak'áán (*corn meal*): **Naadáá'ak'áán** nurtures the mental, emotional, social, and spiritual development of the individual.

Gish (*planting stick*): the **gish** is a tool that the individual uses to replant thoughts for continual educational growth.

Yootgai (*white shell*): **Yootgai** signifies positive mental strength, providing the self-discipline of thinking and preparation.

Doot'ízhii (*turquoise*): **Doot'ízhii** signifies health, positive learning, and the setting of clear life goals using the self-discipline of learning.

Atsá bits'os (*eagle feather*): the **atsá bits'os** represents an individual's unlimited educational potential.

CORE VALUES: IB LEARNER PROFILE

INQUIRERS

Na'ídíkid dooleef

We nurture our curiosity, developing skills for inquiry and research. We know how to learn independently and with others. We learn with enthusiasm and sustain our love of learning throughout life.

KNOWLEDGEABLE

Bił ééhózin dooleef

We develop and use conceptual understanding, exploring knowledge across a range of disciplines. We engage with issues and ideas that have local and global significance.

THINKERS

Bił chohoo' ʔlgo nitsékees dooleef

We use critical and creative thinking skills to analyze and take responsible action on complex problems. We exercise initiative in making reasoned, ethical decisions.

COMMUNICATORS

Bizaad hahóózhqoq dooleef

We express ourselves confidently and creatively in more than one language and in many ways. We collaborate effectively, listening carefully to the perspectives of other individuals and groups.

PRINCIPLED

Hòyáá dooleef

We act with integrity and honesty, with a strong sense of fairness and justice, and with respect for the dignity and rights of people everywhere. We take responsibility for our actions and their consequences.

OPEN-MINDED

Táá ʔtsoní yaa ákonízin dooleef

We critically appreciate our own cultures and personal histories, as well as the values and traditions of others. We seek and evaluate a range of points of view, and we are willing to grow from the experience.

CARING

Bee ajooba'hólóq dooleef

We show empathy, compassion and respect. We have a commitment to service, and we act to make a positive difference in the lives of others and in the world around us.

RISK-TAKERS

Yá'át'éhígíí yee na'ídínítaah dooleef

We approach uncertainty with forethought and determination; we work independently and cooperatively to explore new ideas and innovative strategies. We are resourceful and resilient in the face of challenges and change.

BALANCED

Hózhóogo naagháa dooleef

We understand the importance of balancing different aspects of our lives—intellectual, physical, and emotional—to achieve well-being for ourselves and others. We recognize our interdependence with other people and with the world in which we live.

REFLECTIVE

ʔhoo'aah yaa ntsénakeesgo yee siihdinzin dooleef

We thoughtfully consider the world and our own ideas and experience. We work to understand our strengths and weaknesses in order to support our learning and personal development.

COURAGEOUS

T'áá ʔtsoní yich'j' ha'ólnii dooleef

They possess the mental and moral strength to venture, persevere and withstand danger, fear, difficulty and uncertainty. They are driven by courage on their life journey when faced with challenges and conflicts.

SPIRITUAL

Ádáhodíłzin dóó hodísín dooleef

They develop a spiritual approach to life by walking in beauty through hózhó – living in balance and harmony with the universe through thoughts, deeds, actions and intentions.

POSITIVE SCHOOL CLIMATE

It is Navajo Preparatory School's belief that a positive learning and teaching environment is essential if students are to succeed in school. Students are more motivated to do well and to realize their full potential in schools that have a positive school climate, where they feel safe and supported.

School climate is defined as the quality and character of school life. It may be based on patterns of student, parent/guardian and school personnel experiences within the school and reflects norms, goals, values, interpersonal relationships, teaching and learning practices, and organizational structures.

A school's culture is largely determined by the values, shared beliefs and behavior of all the various stakeholders within the school community and reflects the school's social norms.

The School's community is expected to promote a positive school culture that encourages interpersonal and intergroup respect among students and between students and staff. To ensure that our school provides all students with a supportive and safe environment in which to grow and thrive academically and socially, the following facets of our school community are considered:

Social Environment

- Interpersonal Relations: Students & Staff
- Respect for Diversity
- Emotional Well Being and Sense of Safety
- Student Engagement
- School & Family Collaboration
- Community Partnerships

Physical Environment

- Building Conditions
- Physical Safety
- School Wide Protocols
- Classroom Management

Behavioral Environment, Expectations & Supports

- Physical and Mental Well Being
- Prevention & Intervention Services
- Behavioral Accountability (Discipline & Interventional Responses)

CODE OF CONDUCT

Students are expected to conduct themselves in a respectful, responsible manner. Navajo Preparatory School's mission is to educate the mind, shape character, nurture creativity, and foster the well-being of each student. As a lens through which we examine ourselves and our work, this Code of Conduct guides and informs all aspects of school life. A Navajo Prep graduate learns, lives, and leads by these ideals which are aligned to the School's core values reflected in the IB Learner Profile:

In my personal journey, I:

- strive to be self-aware, self-disciplined, and self-controlled.
- take initiative, adapt, and persevere.
- live with optimism, passion, a sense of humor, and humility.
- make informed choices for a healthy, balanced life.
- advocate for myself.
- pursue excellence in all areas of my life.

In my intellectual journey, I:

- think critically, creatively, and reflectively.
- listen and communicate actively, thoughtfully, and effectively.
- take risks and grow through challenges.
- approach lifelong learning with openness and curiosity.

In my community journey, I:

- respect, support, and show gratitude.
- value, engage fully in, and contribute to the diversity of my communities.
- collaborate with others.
- understand social systems.
- serve others as an active citizen.

In my ethical journey, I:

- act with empathy and compassion.
- act with integrity.
- act with personal and social responsibility.
- act with courage on behalf of others and myself.

FACULTY

History

IB US History	Lesley Tohtsoni	x 313
Navajo Hist./Gov. & US Govt/Econ	Larry Sorensen	x 312
World History/US Govt./Econ.	Janalee Vander Hoven	x 325
Navajo Culture/NM History	Denise Yazzie	x 317

Languages

Navajo Language/Dine Studies	Rose Nofchissey	x 301
Navajo Language/Dine Studies	Kimberly Becenti	x 326
Spanish 1	Hiroshi Iwana	x 150
Spanish II & IB Spanish	Elsa Iwana	x 319

Creative Communications

English I & II	Jeffrey Young	x 314
IB English II & TOK/EE	Cheryl Wolfe	x 303
IB English I & English II	Myrna Mendoza	x 300
Visual Arts and Film	Kyle Joe	x 309
Musical Performing Arts	Ursula Messano	x 323

Math

IB Math Studies	Ann Meyer	x 310
/IB Math I & II		
Geometry/IB Math Studies	Paul Stewart	x 311
Algebra I/Geometry	Janet Clifton	x 306

Sciences

Prin of Chem. & Phy./IB Biology	Allison Henry	x 308
Biology/ IB Environ. Sci.	Kevin Keeley	x 305
Chemistry/ IB Chem.	Yolanda Flores	x 318
Computer Sciences	Michael Gordon	x 126
Phy. Education/IB Sports	Jessica Nez	x 321
Fitness/Health		x 316

STAFF DIRECTORY

Administration		EXT	
Head of School	Shawna Becenti	141	
Dean of Instruction	Keith Neil	320	
Dean of Student Affairs	Joann Begay	137	505-360-1737
Dean of Student Life	Leland Becenti	121	505-801-5939
Athletic Director	Rainy Crisp	117	505-860-6405
Business Manager	Sophina Tyler	113	
Development Director	Ceceilia Tso	123	505-360-1365
Facility Manager	Stacy Irwin	151	505-320-3012
Food Service Manager	Tyrone White	112	928-551-3775
Human Resource	Ada Wilson	123	505-215-4554
IB Coordinator	Donna Fernandez	311	
Network/Tech. Specialist	Lander Morris	136	505-360-0094
Support Staff			
Academic Counselor	Debbie Fowler	137	
Payroll/Travel	Sheryl John	113	505-444-0360
Accounts Payable	Diane Dembowski	152	
Accounts Receivable	Eve Bluehouse	125	
Athletic Secretary/Coaches	Tamara Begaye	304	
Admissions/Career Counselor	Roderick Denetso		
Front Office Desk	DeShanin Yazzie	122	505-326-6571
Library Services	Tami Jo Bechdol	153	
Library Services Assistant	Stephanie Billie	153	
Program Support Assistant	Fredi Tapaha-Van Winkle	119	
Registrar	Margaret Staggers	128	
Special Education	Tarra Hammons		
Student Support Specialist	Anthony Smith	302	505-330-9411
Wellness Coordinator	Delshayne (DJ) John	330	
McKenzie School Based Health Center (SBHC)			
SBHC Registered Nurse	Karen Duncan	116	505-716-7256

Facilities Management		EXT	
Facilities/Trans. Manager	Stacy Irwin	151	505-320-3012
Facility Office /Custodial Supervisor	Bitia Roanhorse	328	
Head Bus Driver	Edith Jones		505-215-4300
Bus Driver	Danny Devargas		505-947-1308
Security			
Officer on Duty		322	505-860-2189
Front Office	120		
Kitchen	133		
Library/Media Center	127		
McKenzie School Based Health Center	115/116		
Shimásáni Café	112		
Student Success Center	140		
Weight Room	316		
Residential Halls	<i>Office Telephones are for business use only.</i>		
Arthur Hall	234		
Bates Hall	242		
Garrett Hall	233		
Manuelito Hall	231		
Zah Hall	232		
Fax Numbers			
Administration	505-327-9213		
Admissions	505-325-9146		
Athletics	505-564-8099		
Business Office	505-326-2155		
Front Office	505-564-8099		
McKenzie SBHC	505-326-1834		

ADMINISTRATIVE OFFICES

OFFICE OF THE HEAD OF SCHOOL

The school administrative offices are located in the Wauneka Leadership Building. The Head of School is the chief executive officer of the School answerable to the Board of Trustees who hold in trust the school's future by setting the purpose, priorities and policies of the school. The Head of School is responsible for translating the will of the Board into administrative action. The Head of School also serves as a steward of the school's resources, is responsible for prudent budgeting and financial management, maintains overall responsibility for the physical plant and takes leadership for long range planning for the school.

OFFICE OF BUSINESS & FINANCE

The Business Manager is responsible for overall budget and accounting with staffing assistance for payroll, accounts receivable, accounts payable, and student accounts.

Student Fees

	Fall Semester	Spring Semester	Ólta' Dóó T'áadoo Le'é Bik'é Azláhígíí Annual Fee
Residential Student	\$ 500	\$ 500	\$ 1,000
Day Student	\$ 400	\$ 400	\$ 800
Additional Child	\$ 300	\$ 300	\$ 600
Dorm Deposit (Non-refundable)			\$ 50
Non-Native Student	\$ 1,500	\$ 1,500	\$ 3,000
Add'l. Non-Native Student	\$ 1,300	\$ 1,300	\$ 2,600

Additional fee for students participating in interscholastic activities: \$50.00 per sport/activity.

**Payment plan for staff who have their child attending NPS may make payment arrangements with the Business Office by selecting payroll deduction for their child's student fee for each year they are enrolled.

Payment of Fees

The annual student fee requirement must be met every year and all financial obligations must be met for graduation. A student fee payment form must be filled out by parent/guardian(s) and submitted to the business office prior to registration. All student fees are paid to the Business Office. Cash, Visa, MasterCard, American Express, Discover, debit cards and money orders are accepted. Personal checks are not accepted. **Day students are required to make a \$250.00 payment and Residential students are required to make a \$300.00 payment by June 30th of each year, to reserve their enrollment. A student fee will be prorated if a student is admitted in the middle of the semester. Additional fees are required for students who participate in the IB programme and dual-credit.**

Payment Plan

There are two types of payment plans:

- Plan A Payments in increments of nine (9) from Aug-April
- Plan B Payments in increments of four (4) in Aug., Nov., Feb., April

Other fees and incidentals are also paid to the business office. Any correspondence regarding balances or scholarships should be directed to the business office.

The student refund policy is as follows:

1. Fees will be refunded at 100% for student withdrawal within the first two days of regular classes.
2. Fees will be refunded at 75% for student withdrawal during the third or fourth day of regular classes,
3. Fees will be refunded at 50% for student withdrawal during the fifth day of regular classes.
4. Withdrawal from school beyond the first five days of regular classes will not qualify for refund of student fees.
5. Academic or Disciplinary Dismissals are not eligible for refunds.

Late Fees

Payments not received by the specified due date is considered late and will incur a \$10.00 late fee for each month payment is not received.

Dishonored Payments

A fee of \$25.00 will be applied to your account for any failed automated payments. The Business Office does not accept Personal Checks. Cash, Money Orders and Debit/Credit Cards are preferred payment methods.

IB Diploma Programme Fees

The following are subject and registration fees paid by the student for the May examination session:

- Registration Fee per Candidate = \$172
- Subject Fee Exams per Candidate = \$119 each exam OFFICE OF HUMAN RESOURCES

The Division of Human Resources fosters an environment where the students, staff and faculty of Navajo Preparatory School can learn, work and live as a community to advance NPS mission and purpose. We believe and it is our goal to attract the best staff and faculty to be a part of the NPS family.

OFFICE OF THE DEAN OF INSTRUCTION

The Dean of Instruction is also the school's instructional leader and is entrusted with the education of all students. The Dean of Instruction is responsible for the quality of teaching and works in a collaborative manner with teachers and staff in the design and implementation of a mission-focused curriculum. The Dean of Instruction has an Open-Door Policy to encourage teachers, parents/guardians and students to meet upon request. The Office of the Dean of Instruction is located in the Betty Ojaye Student Center (BOSC).

OFFICE OF THE DEAN OF STUDENT AFFAIRS

The Dean of Student Affairs oversees all student-related matters to support the whole-child approach. A primary function of the Dean of Student Affairs is to promote a positive school climate and implement a peacemaking and restorative justice process as it relates to matters of disciplinary concerns. The Dean of Student Affairs oversees the School Based Health Center that provides an integrated delivery system in primary medical care, behavioral health, wellness and prevention.

OFFICE OF THE DEAN OF RESIDENTIAL STUDENT LIFE

The Office of the Dean of Student Life is responsible for the wellness of students participating in the Residential Program. Staff within the residential program includes the Dean of Student Life, the Assistant Dean of Student Life, and Residential Advisors.

OFFICE OF IB DIPLOMA PROGRAMME

The IB Coordinator's Office is responsible for organizing and coordinating components of the IB Diploma Programme. The IB Coordinator is responsible for overseeing CAS, EE, and TOK. The IB Coordinator also provides support for both students and staff by developing, selecting, and improving instructional plans and materials to meet the goals of the Diploma Programme.

OFFICE OF ADMISSIONS

The Office of Admissions guides students and visitors with recruitment efforts, campus tours and events, admissions processing and transitioning accepted students into the NPS community.

INFORMATION TECHNOLOGY

Navajo Preparatory School's technology program is designed for a Windows environment. Hardware and Software applications must coincide with the current operating system and network. The Technology Services department oversees information technologies. IT supports student and staff with technology resources that include wireless and LAN network connectivity, email, printing, Microsoft Office 365, OneDrive cloud-file storage and access to computer labs across campus. Please see Technology Services to view our Computer Use Policy, Wireless Communication Devices, Laptop Use Agreement and NPS Child Internet Protection Act.

FACILITIES MANAGEMENT AND TRANSPORTATION

Facilities Management is responsible for the tangible quality of life, and strives to provide physical facilities that are attractive, safe and functional. In addition, the department oversees and maintains all transportation services for students. Please refer to the *Appendix* for Transportation Schedules and Routes. The department maintains 83 acres of grounds, and over 200,000 square feet of building space. Included in this maintenance effort are approximately 37 acres of developed grounds, playing fields and the campus network of roads, parking areas and walkways.

CAMPUS SECURITY

Campus Security is committed to providing a safe environment for our school community. For this reason, NPS maintains a closed campus. Only students and authorized staff are allowed to be on campus. All visitors to campus must enter through the guard station to be permitted entry and must sign in at the Front Office and/or respective program office. Day students that stay beyond the academic day must remain on campus and follow school rules. Residential students are not allowed to leave campus except on designated off-campus days. For assistance, Campus Security personnel at the security office can be reached at (505) 860-2189 around the clock. For life-threatening emergencies, please call 911.

STUDENT RIGHTS & RESPONSIBILITIES

Students will pursue their academic studies to their fullest ability and potential. They will develop as a whole person, seeking to find a balanced life as reflected in the Navajo Philosophy of Learning.

Students are required to read the entire Community Handbook and agree to abide by all policies and expectations, including the Academic Honesty Policy contained herein.

Student Rights

Ólta'í Bibee Haz'áanii Bee Há Nahazt'ígíí Dóó
Bee Ak'ih Hadéest'í'ígíí Dóó binahjí' Aa'adahayánígíí

To assure that students have the opportunity to receive a meaningful education, they have the following rights:

- To physical safety, and to safe and sanitary facilities;
- To consult with teachers, counselors, administrators, and board members without fear of reprisal;
- To be afforded complete confidentiality when consulting with teachers, counselors, administration, and board members;
- To free elections of their peers in student government, and to seek and hold office in accordance with the provisions of the student government constitution;
- To have their parents, legal guardian(s), or authorized representatives view their personal files, cumulative folders, and transcripts in accordance with the Family Educational Right to Privacy Act (FERPA);
- To be involved in school activities provided they meet the qualifications of the sponsoring organization(s), NMAA, Navajo Preparatory School, and other organizations;
- To due process and a fair hearing;
- To seek assistance and counseling support; and
- The school reserves the right to enter a student's room if there is reasonable suspicion that a student's health or welfare is at risk. (See "Room Checks" under "Residential Safety & Procedures")

Student Responsibilities

Ólta'í Bee Haz'áanii Ye'al'ínígíí

To ensure an environment that is conducive for learning, students shall dutifully exercise the following responsibilities:

- Student identification cards are issued to all students at the beginning of the school year. The purpose of student ID's is for school safety, identification for the library usage, and for meals. A \$5.00 replacement fee will be charged if a student ID is lost or stolen.
- To respect the rights of everyone involved in the educational process including teachers, residential advisors, security and all other staff members;
- To exercise the highest degree of self-discipline in observing and adhering to school policies;
- To utilize, maintain, and protect school property and resources;
- To attend class on time, be prepared, show interest in their studies and take responsibility for their own performance;
- To complete all course requirements and assignments to the best of his/her ability;
- To be responsible for his or her own valuables;
- To act in a manner that reflects positively on the individual, his or her family, and the school community;
- To work together to provide an environment that enhances the safety of self and others;
- To maintain a minimum GPA of 2.30 and no failing marks;
- To notify the School Nurse of any medical condition that requires prescribed medication to be brought on campus;
- To show academic honesty in the completion and submission of all work.
- Communicate with teachers, advisor or Academic Counselor when necessary;
- Utilize the Study Hall/Tutoring Services provided by the school effectively;
- Read at least 30 minutes every day outside of school time;
- Give my parents/guardians all notices and information received by me from school.
- Maintain a positive and productive attitude, and always try my best to learn;
- Eat healthy, get plenty of exercise and rest as indicated in the School Wellness Policy; and
- Try to resolve disagreements or conflicts peacefully.

PARENT/GUARDIAN RIGHTS & RESPONSIBILITIES

Parents/Guardians are encouraged to play a proactive role in their student's education/activities. The School firmly believes that the educational process is greatly enhanced through active participation of parents/guardians.

Parent/Guardian Rights

Ashchíinii dóó aniséhé binahjí' bá nahazt'í

To assure that parents/guardians can provide a meaningful education for their children, they reserve the following rights:

- To view their student's personal files, cumulative folders and transcripts in accordance with the Family Educational Right to Privacy Act (FERPA);
- To schedule and meet with school staff regarding academic, residential, and extra-curricular programs;
- To be represented through the Indian Education Committee (IEC)/Parent Advisory Committee (PAC);
- To be informed when an emergency arises; and
- To have the right to translation / interpretation in their native language.
- To refuse services.

Parent/Guardian Responsibilities

Ashchíinii dóó aniséhé baa siláhígíí

To ensure a rich learning environment for students, parents/guardians shall dutifully exercise the following responsibilities:

- To participate in parent-teacher conferences, Parent Advisory Committee/Indian Education Committee meetings, Academic Review meetings and other activities or decisions relating to my student's education;
- To check out their students during the school day only when absolutely necessary; to wait until the end of the school week before taking their student home;
- Share responsibility for the achievement of their child and support their student's extra-curricular endeavors;
- To support the school's mission and policies; and to meet financial obligations to the school;
- To respect, support and work cooperatively with school staff and students;
- To serve as a positive role model at all school events and functions;
- To take care of their child's routine medical, dental, and psychological health services; and seek medical attention from the School Base Health Center when they are ill.
- To inform school staff of any problems or situations which may be harmful to their child or others in the community;
- To have needed ceremonies performed at home or in their communities (off-campus);
- To be held accountable for violation of school rules and policies
- To take responsibility for the actions of their student while the student is on the school campus and/or participating in off-campus school sponsored activities (field trips, etc.).
- Monitor my student's attendance and ensure that my student arrives to school on time as well as follow the appropriate procedures to inform the school when my student is absent;
- Check and assist my student in completing homework and project tasks, when necessary;
- Conduct weekly checks in NASIS.
- Encourage my child to read continuously and discuss what my child is reading each day;
- Promote positive use of time such as, service learning opportunities, clubs, team sports and quality family time;
- Encourage my child to follow school rules and regulations, as well as the School Wellness Policy.
- Volunteer in my student's school or assist from my home as time permits;
- Communicate with my student's teacher about educational needs and stay informed about their education by promptly reading and responding to all notices received from the school;
- Respond to surveys, feedback forms and notices when requested;
- Become involved in the development, implementation, evaluation and revision to the Parent Engagement Policy in this Compact;
- Understand the school health policy and restrictions on outside meals and beverages that are unhealthy.
- Support the attendance policy on no early check outs on Friday's.

PARENT/GUARDIAN ORGANIZATIONS

NPS has two organizations in which parent/guardian(s) can participate. Both organizations have identified objectives and planned activities for parent/guardian(s) to get involved.

Parent Advisory Council (PAC)

The purpose of the Parent Advisory Council (PAC) is to organize and promote events which encourage the active involvement of parents/guardians and to be the liaison between parents and the NPS administration and faculty/staff. The PAC is an advocate for the Parental Engagement Policy that require volunteer service hours to support the school. The PAC meets at least monthly to discuss issues of importance regarding the entire school community, sponsor events and raise funds necessary to support programs.

Indian Education Committee (IEC)

The purpose of the Indian Education Committee is to help develop educational programs designed to meet the specialized and unique educational needs of Indian children and approve all programs funded by the Johnson O'Malley Program. The committee consists of elected parents and guardians of Indian students who are enrolled in schools that are receiving funding under the JOM program.

PARENT/GUARDIAN AND SCHOOL COMPACT

Opt'á í, Amá dóó Azhe'é dóó olt'á haząądóó ąghą deep'ą, apchíní haazhoo'ó íídóopt'á biniíyé

The overall aim of this policy is to develop a parent/guardian involvement program in compliance with Title I, Part A of the Elementary and Secondary Education Act (ESEA) that will ensure effective involvement of parent/guardian(s) and the school community.

School Responsibilities

To increase and improve parent/guardian involvement and school quality, the School will:

- Actively involve and engage parent/guardian(s) in the planning, review and evaluation of the effectiveness of the school;
- Ensure that the Title I funds allocated for parent/guardian involvement are utilized to implement activities and strategies as described in our Parent Engagement Policy and the School-Parent/Guardian Compact;
- Support school-level committees that include parent/guardian who are members of the School Leadership Team, the Indian Education Committee, Parent Advisory Committee, and Academic/Athletic Booster Club;
- Host regular parent-teacher conference days and conduct an annual Parent Day Workshop with topics that include: parenting skills, understanding educational accountability, college readiness, scholarship applications/criteria, grade-level curriculum and assessment expectations; accessing community and support services; and technology training;
- Encourage more parents/guardians to become volunteers;
- Provide written and verbal progress reports to keep parent/guardian(s) informed of their child's progress; and
- Develop and distribute a school newsletter and web publication designed to keep parent/guardian(s) informed about school activities and student progress.
- The school will promote Health & Wellness by encouraging students to eat in the cafeteria and provide healthy snacks and meals to students.

Provide high quality curriculum and instruction consistent with Common Core State Standards and the International Baccalaureate Programme to enable participating children to meet the Standards and Assessments by:

- Respecting cultural, racial and ethnic differences;
- Offering high quality instruction in all content and elective areas; and use academic learning time efficiently;
- Providing instruction by highly qualified teachers and when this does not occur, notifying parent/guardian(s) as required by the Elementary and Secondary Education Act (ESEA);
- Holding high expectations for all students, believing that all students can learn; and
- Making classroom(s) accessible to parent/guardian(s) for observation and speaking with instructors about student progress.

Support home-school relationships and improve communication by:

- Conducting parent-teacher conferences each semester during which the individual child's achievement is discussed;
- Convening a Title I Parent Session to inform parent/guardian(s) of the School's Title I status and funded programs, and their right to be involved;
- Arranging additional meetings at other flexible times for parent/guardian(s) who cannot attend a regularly scheduled meeting;
- Involving parent/guardian(s) in the planning process to review, evaluate and improve the existing Title I programs, Parent Engagement policy and this Compact;
- Proving parent/guardian(s) with timely information regarding performance profiles and individual student assessment results for each child and other pertinent individual school information; and
- Ensuring the Parent Engagement Policy and School-Parent/Guardian Compact are distributed and discussed with parent/guardian(s) each year.

Provide parent/guardian(s) reasonable access to staff by:

- Notifying parent/guardian(s) of the procedures to arrange an appointment with their student's teacher or other schools staff member;
- Arranging opportunities for parent/guardian(s) to receive training to volunteer and participate in their student's class and to observe classroom activities;
- Planning activities for parent/guardian(s) during the school year; and
- Ensure that staff will have access to interpersonal services in order to communicate with limited English speaking parent/guardian(s) effectively.

PARENT/GUARDIAN CONCERN PROCESS

Parent/Guardian concerns are handled with care in our community. Our process for addressing and resolving parent/guardian concerns and complaints is based upon an atmosphere of trust, respect and productivity in a safe and nurturing environment.

Our Core Values emphasize the following guiding principles for addressing concerns:

- All of us – staff, students, and parent/guardian(s) - will be respectful in all verbal and nonverbal communications to foster collaboration, compassion, problem solving, and resolution.
- We will communicate openly and actively with all our community.
- Courtesy, flexibility, and compassion will characterize how we interact with one another daily.
- We will listen and seek first to understand, be timely, maintain confidentiality, and respect various points of view in all our communications.
- Policies and procedures will be communicated clearly and directly.
- Communication about issues or concerns will take place among those directly involved only, with the intent to reach resolution.
- All school policies and procedures will provide the objective framework we follow for resolving issues, e.g., student placement, discipline, and personnel issues.

ACADEMIC PROGRAM

PROGRAM OF STUDY

IB Diploma Programme

The IB Diploma Programme (DP) offers an academically challenging and balanced programme of studies with external assessments that prepares students for success in college and beyond. The IB Programme has gained recognition from the world's leading universities. The Diploma Programme curriculum offers breadth and depth of knowledge in six subjects groups, an Extended Essay, Creativity, Activity, Service (CAS) experience, and Theory of Knowledge course. The DP Programme is an extension of the School's mission to develop "Leaders Now and Into the Future" - Yideesk33g00 Naat'1anii. The goal is to develop future leaders who are inquirers, knowledgeable, thinkers, communicators, principled, open-minded, caring, risk-takers, balanced, reflective, courageous and spiritual (IB Learner Profile).

IB Admission Requirements

A student may apply for admission to the IB Diploma Programme in his/her sophomore year. Applications are available from the IB Coordinator and are due in December of the student's sophomore year. Admission to the program includes the following:

1. Student Application
2. Parent Letter of Support
3. Two letters of recommendation from teachers in a sealed envelope
4. Student agreement/Honor Pledge signed by parent/guardian and student
5. Transcript for 9th grade and 1st semester of sophomore year
6. An Application Essay. The prompt of the Essay is detailed on the Diploma Programme Application.

The IB Advisory Committee will review the application for selection by March 30. The successful candidate should be in good academic standing with demonstrated characteristics of the IB Learner Profile.

Diploma Pathways

Students can choose one of two pathways in the IB Programme to enhance their State Diploma: IB Diploma or IB Course Certificate. Although the choice between the IB Diploma and Certificates is actually made in the winter of the sophomore year, students should become familiar with the IB Programme before registering for 9th grade classes. Proper planning of courses from 9th grade on is beneficial for all IB Programme candidates especially those considering the full IB Diploma path.

Navajo Preparatory School offers a selection of subject choices within the IB curriculum. This fact, coupled with a wide selection of challenging extracurricular activities offered, contributes to one of **the strongest educational experiences available**.

Subject areas by IB Group:	
Group 1 – English A Language and Literature SL/HL	Group 4 - Experimental Sciences Biology SL or HL Chemistry SL Environmental Systems & Society SL Sports, Exercise & Health Science SL
Group 2 - Language B Spanish Ab Initio SL	Group 5 – Mathematics Mathematics SL (HL ONLINE) or Math Studies SL
Group 3 - Individuals & Society History of the Americas HL or Economics SL (ONLINE)	Group 6 – Arts & Electives Visual Arts SL or HL, or a second Group 3 or Group 4/Music SL

1. The IB Diploma - To earn the IB Diploma, a student must successfully complete:
 - a. At least one course and an IB examination in each of the six subject area groups listed. To allow for specialization, normally three subjects (but not more than four) are chosen at Higher Level (HL), and to ensure a broad education, three subjects are chosen at Standard Level (SL).

Higher Level subjects require intensive, in-depth study over two years. These generally reflect a student's areas of interest and academic strength. Standard Level subjects are less demanding, but are still on par with introductory level college courses. SL courses require one full year of study.

Both levels of study lead to exams, which students must pass to receive the diploma. In addition to the exams, students are evaluated on a portion of their regular course work (for example, lab books, essays, portfolios, projects, etc.) completed in each class. These internal assessments are externally moderated by an IB examiner.
 - b. Theory of Knowledge (ToK) Course
 - c. An Extended Essay of 3,500- 4,000 words on a topic of choice
 - d. Creativity, Activity, and Service (CAS)

Upon satisfactory completion of NPS courses and IB requirements, a student on this track will receive: NM High School Diploma, an IB Course completion in each of the 6 courses and an IB Diploma.

2. One or more IB Courses - Any student may register in one or more IB Course Exams and earn an IB Certificate in each course. A student may earn an IB Course Certificate in one or more of the six subject areas listed above by pursuing the same course of study in that subject as that required for the Diploma and successfully passing the corresponding exam. Students on this path may take any number of SL or HL courses. The ToK requirement is not part of the Certificate option. Upon satisfactory completion, a student will receive: NM High School Diploma and an IB Course Certificate in each course in which students successfully complete an IB exam.
3. Navajo Preparatory Diploma - Regardless of IB Pathway all students are required to complete the Senior Atsa Exhibition consisting of the EE, CAS Experiences/Fair, Colloquium and Portfolio which are graduation components for all students at Navajo Preparatory School. Students can take any number of SL or HL courses and do not partake in IB exams. Students complete all internal assessments in their IB courses. *Upon satisfactory completion of NPS courses, a student on this track will receive: NM High School Diploma.*

Dual Credit College Courses

Junior and senior students with a minimum GPA of 2.50 have an opportunity to enroll in dual credit courses provided through San Juan College. Students must have room in their class schedules to take dual credit courses. Assistance is provided with the initial application for admission and completion of the Accuplacer, which is San Juan College's placement test. Only certain courses are approved for dual credit courses. NPS will provide Transportation, Text Books and Lab Fees during the Academic Year, from August through May.

Students enrolled in Dual Credit courses will agree to the following:

- Maintain a 2.50 quarterly GPA and must be in good academic standing.
- Students must adhere to the Navajo Preparatory Community Handbook and San Juan College Code of Conduct; including *Transportation* and *Closed Campus* safety.
- Parent/Guardians must adhere to student check-out procedures. See *Student Sign-In/Sign-Out*.
- Attendance at dual credit classes is mandatory. Student can be withdrawn from a class for non-attendance.
- In accordance with FERPA regulations, students are responsible and *must* communicate with parents/guardians regarding their course grades and progress.
- Pay any fees not paid for by Navajo Preparatory School.
- Purchase appropriate materials and supplies for SJC courses, plus any additional on-line fees required for course participation.
- Communicate directly with College instructors regarding grades, assignments, tutoring, class schedules and deadlines.
- Student must receive a grade of C or better to continue in the dual credit program.
- If student completes a course with a D or below or Withdraw, they become ineligible for the Dual Credit Program for the following semester until grades improve.
- Students must utilize school transportation to and from San Juan College. **Personal transportation is prohibited.**
- Students must be aware of all San Juan College deadlines, holidays and other important dates
- Parents/Guardians and Students must be aware during certain days Navajo Preparatory School may not be in session but San Juan College is. Students are *responsible* to attend classes and school transportation is not provided.
- Students that fail or withdrawal from any dual credit course will be responsible for repayment of books or fees associated with the class.

GRADUATION REQUIREMENTS

Effective for students in Class of 2018 and after:

4	Mathematics
4	Language Arts
5.5	Social Studies
4	Science
1	Foreign Language
1	Fine Arts
1	Physical Education
.5	Health Education
2	Navajo Language
5	Electives
28	Total

College Preparation Expectations

Students undergo an educational process that prepares them for admission to and successful completion of a college education.

Experience has shown that the expectations for a competitive and successful college prep student, at the time of graduation, are a minimum cumulative GPA of 3.0, a minimum ACT composite score of 21, and a high school resume that reflects strong leadership, service learning project and extra-curricular participation. These expectations should frame the personal goals of all students and their parent/guardian(s). For this reason, the minimum standards for graduation are higher than those found in traditional high schools.

Graduation Requirements

Students are required to meet the 28-credit requirement (with a minimum 2.0 overall cumulative GPA) in order to graduate and to participate in graduation activities. In addition, seniors must successfully complete all four components of the Senior Atsá Exhibition. The school reserves the right to place appropriate conditions for participation in commencement exercises should the student jeopardize her/his good academic standing.

Students must satisfactorily pass the following assessments as part of a Graduation Requirement:

- PARCC - Partnership for Assessment of Readiness for College and Careers (English Language Arts and Mathematics)
- NMSBA – New Mexico Standard Based Assessment (Science)
- End of Course Exam (History)

Atsá Exhibition

Onít'ái ní'iit'áhagíí nitsaago dinéjí bee é'oolíít, Astá wolyéó náaltsoos yeeháadidoollíít

The Senior Atsá Exhibition is a graduation requirement. The purpose of the exhibition is to develop responsible global citizens and leaders through excellence and inquiry. It is a two-year study that provides seniors with an opportunity to focus on a topic and project that they are passionate about. There are four required components of the Senior Atsá Exhibition Project:

1. Extended Essay is an argumentative research paper with a concentration in a particular content area consisting of 3,500-4,000 words;
2. Creativity, Activity and Service (CAS) is an experiential learning process. It includes a long-term project that is measured against the IB Learner Outcomes and exhibited/presented during the Annual CAS Fair;
3. A portfolio or compilation of the student's work to showcase high school works and demonstrate college readiness; and
4. The Colloquium is an oral presentation where Seniors will present their extended essay and defend their argument to a panel of judges and community stakeholders.

Proposals and plans for the Extended Essay and the CAS Experience are submitted to the IB Advisory Committee in the Junior year. The proposals for both EE and the CAS will be entered into the ManageBac system by the student for monitoring, documenting and evaluating by the teacher Advisor, IB and EE/CAS Coordinators. Further information is detailed in the IB Diploma Programme and Atsá Exhibition Handbook available from the IB Coordinator.

Seniors who are not on track in meeting their Atsa graduation requirements by end of fall semester will be placed on Scholastic Action.

Valedictorian, Salutatorian & IB Diploma Candidates

Selection of Valedictorian, Salutatorian and Honor Graduates will be based on the following criteria and weight:

1. Cumulative Grade Point Average – 50%
2. ACT and/or SAT scores – 25%
3. Dual Credit Courses/IB Diploma Completion – 15%
4. Attendance at Navajo Prep for four years – 10%

TRANSFER STUDENTS

Nááná łahdeéé Óta'í Navajo Preparatory School jí' Atah Yígháago

The School accepts a limited number of transfer students each year. Transfer students are subject to the same 28 credit graduation requirement and Atsá Exhibition.

ASSESSMENT & EVALUATION

Óta'í Íhoopaahjí Bee Naalkaahígíí Dóó Yee Honitnéhígíí

Student will be awarded letter grades of A, B, C, D, and F. Grade point average will be calculated as prescribed on table below.

%	Letter Grade	General Course Weight	IB Diploma Course Weight
100-98	A+	4.333	5.0
97-91	A	4.000	4.5
90-88	B+	3.333	4.0
87-81	B	3.000	3.5
80-78	C+	2.333	3.0
77-71	C	2.000	2.5
70-67	D+	1.333	1.333
66-63	D	1.000	1.00
62	F	(NO CREDIT)	(NO CREDIT)

Assessment Policy

The purpose of assessment and evaluation is to improve students' mastery of concepts and ideas towards becoming lifelong learners. Formative assessments will be used to gauge the students' progress and growth throughout each unit. Summative assessments will be used at the end of the unit to provide clear feedback of the depths of students' knowledge in the course. IB rubrics relating specifically to the course content will be utilized to assess students' achievement. A variety of assessments evaluation strategies will be used to demonstrate the full range of the student's learning.

Purpose of Assessment

Navajo Preparatory School assesses students in order to:

- Enhance student learning;
- Continually monitor and evaluate student progress towards meeting course benchmarks and IB Diploma Program standards;
- Provide feedback to students, parent/guardian(s) and other stakeholders;
- Gather evidence to support teacher reflection on the effectiveness of their teaching;
- Analyze curriculum assessment data to inform teaching and learning; and
- Develop short and long-term achievement goals for NPS.

Principles of Assessment

Navajo Preparatory School administration and academic staff recognize that assessment plays a crucial role in the cycle of planning, teaching, assessing, reporting, and reflecting for all stakeholders.

The principles of effective assessment for all stakeholders will demonstrate the following:

- A broad range of conceptual understanding and skills;
- Critical thinking abilities;
- A variety of learning styles and intelligences;
- Participation in self-assessment;
- Self-reflection on strengths and areas for improvement;
- Goal setting for learning;
- Assessments to inform and improve instruction;
- A variety of assessments;
- Analysis of data to identify patterns in student performance and needs;
- Timely and clear feedback that is constructive towards future learning; and
- Maintenance and communication of detailed assessment records.

Assessment Practices

Equity in assessment is afforded through fair, meaningful, and consistent opportunities for students to demonstrate their mastery of concepts and skills. Assessments are checked for validity, reliability, and comprehensiveness and include psychometric, essay, and performance tasks across the curriculum.

A wide range of formative and summative assessments includes: multiple-choice style quizzes and tests, short and extended responses, essays, research papers, projects, portfolios, class discussions, group and individual oral presentations, individual oral commentaries, multimedia presentations, skits and performances, problem solving teams, group critiques, historical investigations, experimental investigations, sketchbooks, investigation workbooks, studio work, fieldwork, response journals, and reflection logs.

An accurate measure of the student's true achievement is continuously sought to inform teaching and learning. Differentiation occurs when necessary for students to demonstrate their understanding. Multiple intelligences are applied to formative assessments to foster critical and creative thinking. Emphasis on higher-order cognitive skills supports inquiry-based, constructivist learning.

Ongoing class discussions and private conferences take place throughout each course. Peer and self-assessments help students to develop a range of effective strategies as they actively build their understanding of new concepts and learn how to judge the quality of coursework against well-defined criteria.

GRADE REPORTS

Naaltsoos óita'í ihoo'á'ígíí yaa halne'go nihich'í' anídaal'íjh

Academic progress reports are issued to students and their advisors, and are mailed to parents/guardians twice per semester at 9 week intervals. Students do not receive credit for courses that are not completed and for *excessive absences (See Attendance/Absences) that have not been successfully petitioned. Final letter grades and cumulative GPA appear on official transcripts.

DEAN'S LIST & HONOR ROLL

Students who maintain a 3.75 and above semester GPA with no letter grade lower than a "B" will earn a place on the Dean's List.

Students maintaining a 3.30 and above semester GPA with no grade lower than a "C+" will qualify for the Honor Roll. Eligible students must carry a full course load of four (4) credits per semester to include dual-credit college and IB Diploma coursework.

COLLEGE PREP ADVISORY

The College Prep Advisory is offered two days a week as a 40-minute advisory period for all students. Sophomores, juniors and senior class students will select their advisors at the end of the previous year. A pass/fail grade is offered in this class.

College Prep Advisory is an opportunity to build positive relationships among a small peer group and to participate in constructive activities, such as peer tutoring, peer mediation and mentorship. Students will develop executive skills, such as time management, study strategies, goal setting and problem solving. Students will work closely with their advisors to set academic goals and planning.

Topics for College Prep Advisory may include:

- IB Learner Profile
- Leadership Skills
- Executive Skills
- Workplace Skills
- College and Career Planning
- Community Service Projects
- Reading Strategies
- Test Skill Preparation
- School Wide Themes

Students will also participate in activities such as school-wide reading, CAS and Senior Atsa Projects during College Prep Advisory.

ACADEMIC GUIDELINES

ATTENDANCE

Ólta'di hojiloqgo Bee Haz'áanii

Students have the responsibility to attend classes on a regular basis. Attendance is required for the following:

1. All scheduled classes
2. All scheduled study halls
3. All scheduled advisory meetings/homeroom
4. All school approved assemblies
5. All school approved field trips
6. All scheduled committee meetings.
7. All other required activities approved by the Dean of Instruction or Dean of Student Life

Absences

Biniinaaní Hojiloqgo Olta'Jisihqo

When a student returns to school after an absence, a note of explanation must be signed by a parent/guardian or a doctor, and submitted to the Attendance Clerk within 24 hours of returning to campus. Fax and E-mails will be acceptable only when accompanied by telephone confirmation. Telephone calls do not pre-empt the "note of explanation." If a note is not provided when the student returns, the absence will automatically be considered unexcused. No makeup work is allowed for an unexcused absence.

Excused Absences

Students are responsible for obtaining an Admit Slip from the Attendance Clerk or Front Desk Receptionist. Students will have all teachers sign the Admit Slip.

Absences will be considered excused for the following reasons:

- Illness and medical appointments: a doctor's note is required to excuse absences for three consecutive days or more. For medical appointments, a doctor's note is required. The school will accept a note from parent/guardian(s) if the student is ill for one or two days;
- Bereavement or serious family illness;
- School sponsored activities and athletics;
- Traditional Ceremonial absences;
- Immediate family member emergency with explanation;
- College visitations will only be excused with appropriate documentation from the college; and
- Any absence not listed is unexcused unless approved by the Dean of Instruction.

Unexcused Absences

Students with an unexcused class absence will not be allowed to make up missed work. Students serving suspension will receive an Unexcused Absence. All absences without proper documentation are considered unexcused until proper documentation is provided to the Attendance Clerk. It is the parents'/guardians' responsibility to personally contact the school regarding absences within a 24-hour period of the student's return to school.

Cumulative Absences

Excessive absences will negatively impact a student's grades. *Excessive absences* mean a student has accumulated seven or more cumulative unexcused or excused class absences. Parent/guardian contact will be made by the Attendance Clerk after the third day of a student's absence.

Attendance warning notices for cumulative absences are mailed home after (4) days of excused or unexcused absences. When a student accumulates (7) unexcused/excused absences during a semester, the school will notify the student's parent or guardian via a formal letter. A meeting with the parent/guardian(s) may also be scheduled. The meeting may include, but is not limited to, the parent/guardian, student, attendance clerk, and/or Administration.

Per BIE regulation, a student may not miss (10) or more days in a class per semester, whether the absences are excused or unexcused. A student with excessive unexcused absences will not receive credit for the course(s). Students are placed on 'no credit' status. The student may be required to repeat the course to meet the school's graduation requirement. Students with excessive absences, excused or unexcused, will be required to write an appeal letter submitted to the Attendance Committee.

Attendance Committee

The Dean of Instruction, Attendance Committee and 504 members, if needed, will hear petitions from students who wish to appeal excessive absences. Students who have been referred to the Attendance Committee must appear before the committee with their parent/guardian. The Attendance Committee can determine release of credits, partial loss of grades, required interventions or other measures.

Consecutive Absences

Ólta'í Nízaadgóó ÍNeeznááiqóóÓ Ólta' yitsádiníleehqo

Students who compile ten (10) consecutive unexcused absences will automatically be dismissed from Navajo Preparatory School in accordance with the State of New Mexico Expulsion Policy and state BIE Regulations.

Tardy Policy

Ólta'í Ólta' Góne' Akéádi Yah Iiqháahqo

Tardiness is defined as a student being late after the scheduled starting time of any class, activity, or appointment. A student who is late for any reason must receive an admit slip from the Front Office to enter class. After ,three (3) unexcused tardies, parents or guardian will be notified by the teacher or other school official.

Student, Parent and Guardian Role for Absences and Tardies

If a student will be absent from school, the parent or guardian must call the appropriate attendance clerk before 8:30 a.m. on the day of the absence at 505-326-6571, ext. 122.

Extended traditional ceremonies for the student will require prior written notification from parents/guardian/medicine man. Notification shall include date(s) of ceremony.

Travel with family or friends for vacations that do not fall during the set vacation period on the school calendar is considered unexcused.

If a student misses two or more classes during a school day, he or she is considered absent for the entire day.

If a student has been absent, he/she is responsible for requesting and completing make-up work in each class missed. If the absence was excused, the student has two days for each day absent to make up new assignments. Previously assigned work (for which the deadline was missed due to absence) is due on the day the student returns.

If a student will be absent for three days or more, the Dean of Instruction should be notified, and a homework request should be made through the Academic Counselor.

During the final examination period, a student with an *unexcused absence* will not be allowed to make up the test or portfolio presentation unless approved by the Dean of Instruction.

INTEGRITY

Academic Honesty

Students are encouraged to live a life based on honesty and integrity, by knowing who they are and what values they represent. Honesty and truthfulness are virtues, and students must police themselves on a daily basis. It is expected that students practice authentic authorship and respect others' intellectual property. Having personal integrity is an important leadership quality for "Leaders Now and Into the Future – Yideeskáággóó Naat'áanii".

Cheating

Cheating is misleading an instructor in some way so as to receive or attempt to receive credit for work not originated by the student or work performed with unauthorized assistance. Cheating includes, but is not limited to:

- Copying from another student's examination, assignment or other coursework with or without his/her permission.
- Unauthorized "cheat sheets," notations on desk, clothing, self, or personal technology devices (such as graphic calculators or data organizers) as "electronic cheat sheets".
- Using technology inappropriately to complete coursework or examinations.
- Resubmitting substantially the same work that was produced for another assignment or course without authorization.

Plagiarism

Plagiarism is the use of passages, materials, works or ideas that come from someone or something else, without properly naming the source. Plagiarism can be avoided by utilizing academic research formats such as: American Psychological Association (APA) or Modern Language Association (MLA). Examples include, but are not limited to:

- Copying someone's assignment.
- Copying test or other materials from the Internet or other source without citing them.
- Paraphrasing items from a book or article without citing them.
- Using translation software to translate sentences or passages.
- Using the same sentence structure or thesis as another source without citing it.

Consequences

Minor infractions of the academic honesty policy will have consequences determined by the teacher. Consequences may include but are not limited to any combination of 1 through 6 below:

1. Redo the assignment/exam
2. Reduced grade for the assignment/exam
3. Zero for the assignment/exam
4. Letter of Apology
5. Student explains offense to parent/guardian
6. Teacher contacts parent/guardian

Three (3) minor infractions become a major violation of academic honesty and will be addressed by a Discipline Committee.

HOMWORK EXPECTATIONS

Homework is a necessary extension of the school day and an important part of a student's educational experience to build responsibility, self-discipline and lifelong learning habits. Homework provides students with the opportunity to apply information they have learned, as well as complete unfinished class assignments, projects, research papers, presentations, quizzes or other tasks.

Students are expected to complete all assignments by the designated due date. *Teachers may reserve the right to deny any late work.* If late work is accepted, it must be submitted within three class periods of the deadline and will receive a percentage off the original grade for each class period it is late. Late work will not be accepted after three class meetings. Students are encouraged to submit assignments before deadlines.

SCHOLASTIC ACTION

Óta'í Akéédéé' Ditiishgo

Academic Study Hall

Óta'í Hodéázyéelqo Óhoo'aaqo

Students are expected to attend study hall regularly throughout the school year. The study hall program is required for students with a 2.30 GPA and below. The study hall monitor must be informed of any absences and prearranged appointments in writing by the parent or guardian, or NPS staff member. This will excuse the student from study hall.

Study halls may be assigned according to the student's academic performance throughout each quarter. **Students with GPAs below 2.30, students on academic probation or with at risk status are assigned to a specific location and time for study hall depending on their needs and are expected to attend regularly.**

Refer to the Before/After School Activity Schedule.

Academic At-Risk

Akéédeé' nijidizlį'qo

The At-Risk Program is for students who need intensive support to improve their academic standing. **A student with a 2.00 GPA and lower or an "F" in any course** at the end of the semester will be placed in the Academic At-Risk Program. Parent/Guardians will be informed by mail and contacted by phone regarding their student's academic status. Academic At-Risk students are subject to the Four Levels of Scholastic Action.

The At-Risk student along with their parent/guardian must have a conference with the Academic Counselor and the Dean of Instruction to be placed on a required Academic Probation Contact.

Students in the At-Risk Program will be monitored by the Academic Counselor and additional tutoring services and study hall from 4:00 to 6:00 p.m. are required. Parents or Guardians of a student on At-Risk are discouraged from checking out their student during Study Hall hours to promote a cooperative learning environment. A commuter student on At-Risk may ride the afterschool bus at normal departure times. Residential Students have an 8:00 p.m. curfew for the remainder of the 9-week grading period.

Four Levels of Scholastic Action

When a student falls short of expected academic standards, including Senior Atsa Exhibition, the Academic Review Committee meets to make a recommendation for scholastic action. The recommendation, once voted on becomes the action of the faculty and results in scholastic action: a formal expression of the school's concern to both students and parent/guardian(s).

Scholastic action is not punitive. Rather, it alerts students, parent/guardian(s) and advisers to the seriousness of those difficulties. It is hoped that this official warning will encourage students in academic difficulty to improve their study habits or seek help from available sources on the campus. There are four levels of scholastic action:

Scholastic Warning is usually the first stage of formal action. Often the attention paid at that level is sufficient for students to improve their academic record. The Academic Counselor in conjunction with varying staff will create a plan with the student to address the student's academic needs and concerns. This plan may include weekly grade checks, tutoring sessions, planner checks, extra study hall time, and any other necessary meetings with students. Failure to adhere to the personal plan will result in appropriate action with the Dean of Instruction.

Scholastic Probation follows Scholastic Warning when the level of academic concern has not been addressed or met by the student and/or the situation has significantly worsened. This level of scholastic action indicates that the student's status with NPS may be in jeopardy. The Academic Counselor will send notification of Scholastic Probation to parents/guardians at the end of each semester. The student, parent/guardian, Academic Counselor and Dean of Instruction will complete a Scholastic Probation Contract designed to improve academic performance. A student is removed from Scholastic Probation once good standing is achieved at the end of the semester.

For a senior who is not on track to meet Atsa Exhibition graduation requirements, the IB Coordinator will contact the parent/guardian and the student will be placed on Senior Atsa Exhibition Contract for Completion. All students who have been on Scholastic Probation at any time in the school year will have their academic performance reviewed at the end of each semester. **The Academic Review Committee will make recommendations to the Dean of Instruction in regard to academic dismissal/withdraw. The final decision cannot be appealed. Parent/Guardian(s) of students on review are expected to attend the committee meeting.**

Advice to Consider Withdrawing typically comes when all avenues of reasonable academic support have been pursued but with little evidence of satisfactory progress.

Requirement to Withdraw occurs when a student's academic performance does not match the academic demands of the institution, when there is a generally unsatisfactory academic record, when there is a continued willful neglect of work or when there is no likelihood that the student will be able to meet the graduation requirements.

DRESS EXPECTATIONS

Ótta'í Hadít'ée

Students are expected to "**Dress for Success**" in representing the school, their families and respected community in a professional and courteous manner. Students are expected to maintain the type of appearance that is not distracting to the educational process and community. In alignment to our mission statement, Traditional Native attire is greatly encouraged.

Regular class dress, as addressed below, is to be worn during the academic day beginning at breakfast and continuing through the last period of the day. Students should wear neat, clean and comfortable clothing appropriate to their age, the school setting and the weather. Students should maintain class dress throughout the academic day, regardless of their individual schedules.

Class Dress

Bottoms: Students can wear pants, shorts, a skirt or a dress. Shorts, skirts, and dresses must be appropriate in length for a professional environment. Shorts, skirts, and dresses should not be shorter than two inches below fingertips.. Leggings, tights, yoga pants, etc., may only be worn under a dress, skirt and shorts.

Tops: Male students must wear a collared shirt, with the collar visible at all times; button-down shirts must be buttoned. Female students may wear blouses, cardigans and dress shirts that do not expose cleavage. College or NPS T-shirts may only be worn under a buttoned collared shirt for both males and females.

Spaghetti straps, strapless tops, muscle shirts and tank tops are not allowed; these include backless shirts and other tops that have less than "three fingers width" of coverage on the shoulders. Students should wear an appropriate top that covers undergarments and midriffs. Tank tops may not be worn as a top layer. ***T-shirts are not allowed during academic hours.***

Sweatshirts may be worn above aforementioned shirts provided they have a Navajo Prep logo.

Athletic Wear: T-shirts, sweatpants, shorts etc., may not be worn during academic day unless they are required for a specific activity. Also, Student Athletes participating in various sports may wear their "Eagle Jersey" during the school day.

Footwear: May be of any style, including dress shoes, western boots, athletic shoes, leather sandals and moccasins. House slippers or flip-flops are not permitted during academic hours. Footwear must be worn at all times on campus. No clothing or footwear may be worn that could threaten the safety or health of the wearer or other students (e.g, shoes with wheels in the soles, or excessively high heeled or platform shoes).

Hair and Headwear: Extreme hair colors such as fluorescent, bold or distracting colors are not allowed. Hair should be of a naturally-occurring color and not distract from the learning process. Hairstyles that fall in front of face must be above the eyebrows. Boys' hair may not extend below the shirt collar unless traditionally styled, tied-back or styled appropriately. School administration has final authority over determining the appropriateness of hairstyles.

Hats, caps, or hoods may not be worn inside any building. Repeat offenders will have headwear confiscated and parents/guardians will need to pick up the head wear. Culturally appropriate headwear may be worn if approved by the Dean of Instruction. Bandanas may only be worn in accompaniment of native cultural attire.

Seasonal Wear: Must be worn appropriately and timely: stocking caps, gloves, and sunglasses. Items must be removed when entering NPS buildings and remain off until class/event has concluded. Only NPS hoodies are allowed during the winter season and must be worn with a collared shirt.

General Attire:

- Clothing with inappropriate or offensive messages is not allowed;
- Extremely short, revealing, tight, soiled, oversized, or ripped clothing may not be worn during academic day. Undergarments must not be visible;
- No visible tattoos, colored eye contact lens (unnatural colors i.e. white/red lens) or body-piercing. Gauges are not allowed. Earrings are allowed for females and traditionally worn earrings for males;
- Chains attached to wallets or clothing is prohibited; and
- Avoid excessive use of cologne or perfume.

Students inappropriately dressed for school will be asked to change their attire immediately.

Formal Dress

Formal dress is worn at formal dinners, special NPS guest functions and on athletic trips away from NPS:

- Traditional Native Attire
- Tailored jacket
- Collared dress shirt and tie
- Blouse

- Dress or Skirt
- Dress pants
- Trousers
- Socks
- Appropriate shoes (no sneakers, flip-flops, sandals)

Casual Dress

Casual dress may be worn in the evening and on weekends. Casual dress can include t-shirts, jeans, and athletic attire if clean and in good repair. No clothing or footwear may be worn that could threaten the safety or health of the wearer or other students (e.g., shoes with wheels in the soles, or excessively high-heeled or platform shoes).

In respect to the NPS Community and our school values, attire must be free of offensive words, symbols and images. Clothing, garments, jewelry, hats, caps, backpacks, and tattoos must not display emblems or logos relating to alcohol, illegal or abused substances, gangs, violence, sex obscenities, satanic symbols and/or the occult (skulls).

Fridays and **other special scheduled days** such as Hozho Naasha Week, Mountain Day, Snow Day, Homecoming Week and "Spirit Days" are casual dress down days when NPS logo or college t-shirts, sweatshirts and jerseys are acceptable. Any student with questions or concerns about the dress code should address in a Formal Letter, to the Dean of Instruction.

STUDENT RESOURCES & SERVICES

Óta'í Bee Baa Áháyánígíí

ACADEMIC COUNSELING

Óta' í yíká' a nídaalwo'í

The Academic Counseling department assists students in planning a successful academic experience. The services provided include the development of a four year academic plan, course selection, assistance in overcoming difficulties during the high school career, and guidance toward enriching post-secondary opportunities.

Multiple testing assessments are required to measure achievement. These included the PARCC, NWEA, ACT, Work Keys, PSAT and SAT for selected students. The test results are made available through the academic counselor to school administrators, faculty, and parent(s)/guardian(s) and students. Multiple testing assessments are required to measure achievement.

The college counseling process begins during the freshman year. In addition to taking national exams each fall, all underclassmen are exposed to a range of possible post-secondary schools and seminars for all grades. There is an expectation to attend ACT prep classes in the summer to prepare for college entrance exams. The senior year activities include attending college fairs, meeting with college representatives, selecting a college, and completing applications for college admission, financial aid, and scholarships.

REGISTRAR SERVICES

Transcript Requests

Óta'íYík'ehqo Ííta'íqíí Naaltsoos

Transcript requests forms are available and need to be submitted with the Registrar's office. Official transcripts cannot be released without the signature of the student, parent and/or legal guardian. There is no charge for processing transcripts. If the student has any unpaid student fees with the school, the official transcript will not be issued until cleared from the business office. Transcript requests will be processed within 48 hours.

Incompletes

Óta'í T'áadoo Aitso ÍipTa'qóó Íípta'qóó Binéél'áádaqo

The instructor must fill out an Incomplete Grade Form from the Registrar's Office and return it into the Dean of Instruction's office before grades are issued. Incompletes will be given only in cases of extreme circumstances. The student will automatically be issued a failing grade within three (3) weeks unless the "Incomplete" has been resolved and changed to a passing grade by the administering faculty member and the Dean of Instruction.

Term Checkout Procedure

Daanqo Óta'í Ch'ééhájeehqo Bik'ehqo Óta'í Bit Ch'ééjít'aashqo

All students are required to complete an end of term checkout form. The checkout date falls on the last day of the semester. Early check-out is not allowed, unless approved by the Dean of Instruction. Each student must take the checkout form to listed individuals for proper release in the order listed.

Any lost/damaged books, materials, or equipment will be the financial responsibility of the student and parents/guardians.

Any student who does not properly check out for the term will not be allowed to check into the dorm or receive their class schedule and transcript the following term until they have properly checked out.

Year-End Early Release

Nida'iiniíshqo Óta'í T'ahdoo Ch'éjeehqóó

Parents will not sign out students before their final class unless there is an emergency or unexpected circumstance. Family vacations and other school/college graduations do not constitute an emergency. In case of emergency a written & signed notice must be received by the front office and approved by the Dean of Instruction. In addition, financial responsibilities must be met or addressed with the Business Operations Manager.

Withdrawal from School

If a student has to withdraw from school for any reason, the student must see the Dean of Instruction then the Academic Counselor before proceeding to get the withdrawal documentation from the Registrar's Office. The student will be given a withdrawal form, which must be signed by the parent or legal guardian first and then signed by all teachers, Librarian, Athletic Director, Business Office, Academic Counselor, Dean of Instruction and Dean of Student Life. The teachers will record the checkout grades and verify that books are turned in and the student's record is clear. Any outstanding fees must be paid at the Business Office.

Student Sign-In/Sign-Out

Óta'í Bit ch'ééh Jít'aashqo

Parents must have proper forms on file with the Registrar authorizing individuals to check a student out of school. As a matter of protection, school personnel may request photo identification prior to the release of a student.

No student shall be permitted to leave school at any time without authorization through the checkout procedures outlined in the community handbook.

All students coming on or returning to campus must report to the Front Office during academic hours. After hours, student must check-in at their Residential Hall.

All students must be signed out by authorized family members. **No one under the age of 21 is allowed to check out a student. An adult sibling (age 18 and over) may check out a student with written parental permission.**

To add persons to the checkout list, written parental approval with identification must be received prior to check out during academic and residential school hours. Notes, faxes and emails must be cleared by the Registrar prior to any name being added to the checkout list. Requests must be made by 5:00 p.m. each business day. As a matter of safety, students will only be released to authorized individuals who are alcohol and drug free. Due to safety and liability, parents may only check-out their own students, unless written permission is provided by all parties.

The liability for the student is transferred to the person who is signing responsibility on the appropriate checkout form. Students do not have permission to sign-out other students.

Students eligible for self-checkout must be at least 18 years old. Students with a "Certification of Parental Consent" for self-checkout are still obligated to provide parent notification in the event that student will need to leave campus. Students who are eligible for self-checkout cannot check out younger NPS siblings during academic hours.

MCKENZIE SCHOOL BASED HEALTH CENTER

McKenzie Olt'á bíí haząąjí bee azee' alí

"Promoting Health for Academic Excellence"

The goal of the McKenzie School Based Health Center (SBHC) is to promote the overall health of students so they can benefit fully from their Navajo Prep experience. Located in the Betty Ojaye Student Center, the SBHC provides primary care and mental health services. The SBHC also offers a variety physical and mental health education programs. All students attending Navajo Prep are eligible and encouraged to utilize the School-Based Health Center services. A parental consent must be signed to allow a student to utilize these valuable and convenient services.

By enrolling in the McKenzie SBHC, students will have access to the following primary care services offered on campus:

- sports physicals
- illness care
- prescription medications
- referrals to other providers
- diabetes prevention & management
- injury care
- nutrition counseling
- immunizations
- laboratory tests
- mental health counseling

If a student already has a medical provider, the SBHC will work with the provider to ensure continuity of care.

Most health services are provided through Shiprock Area Indian Health Service. No student will be turned away due to lack of health insurance or inability to pay. However, private health insurance may be billed for health services.

The SBHC also sponsors a variety of health education and wellness promotion opportunities for students throughout the school year.

Professional Staff

A Board-Certified Pediatrician who also serves as the primary physician. The Board-Certified Pediatrician is available for services on weekly scheduled office hours.

A Health Assistant who works closely with the school nurse and board-certified pediatrician to meet the health care needs of our students.

A Registered School Nurse who staffs the Health and Wellness Center throughout the academic day. The School Nurse is available to support the basic health needs of students, including minor illnesses and injuries, chronic illness, monitoring, etc. The School Nurse may refer a student to the emergency room, urgent care clinic or to a physician at the McKenzie SBHC as needed.

A Student Support Specialist who provides support and teaches the lifelong value of health and wellness.

Medications

Óita'í azee' choyof'íigo

In order to ensure health and safety, **students are discouraged from bringing their own supply of over-the-counter medications to school.** Over-the-counter medications including acetaminophen (Tylenol), ibuprofen, antacids, cough drops, and bismuth (Pepto-Bismol) are available to students after assessment by the School Nurse or Health Assistant. If the School Nurse or the Health Assistant is not available, a Residential Advisor or another trained school staff member will have a limited stock of over-the-counter medications that may be dispensed at the staff member's discretion. All medications that are dispensed to students are documented for review by the School Nurse to assure safety. The Health Assistant, Residential Advisors, and select NPS staff are trained annually in safe administration of medications to students.

According to the Supervised Self-Administration of Over-the-Counter & Prescription Medications Policy, **students must check-in all over-the-counter, prescription, and traditional medicines or herbs. All medications that are checked-in must be accompanied by a note from the health provider or parent/guardian stating the purpose of the medicine.**

Medication not properly checked in will be confiscated until parent/guardians are contacted and proper check-in procedures are followed.

Day students should check-in their medication directly with the School Nurse. For residential students, if the student arrives on campus in the evening, the student may check the medication in with the Residential Advisor. In the morning, the Residential Advisor on duty will check-in the medication with the School Nurse on behalf of the student. The School Nurse will generate a prescription medication administration log. Then she will return the medication, log, and information about the medication to the student's Residential Advisor for safe-guarding and administration to the student.

Medications which students are permitted to have in their possession after proper check-in include: traditional medicines or herbs, asthma inhalers, epinephrine injectors, oral contraceptives, prescription creams, and vitamins. Other exceptions may be made for students if an agreement is made in writing between the parent/guardian(s), the student, and the School Nurse. In such instances, the student will self-administer medication, document each time the medication is taken, and submit this log to the School Nurse to monitor compliance and safety. *The same check-in procedures must be followed for all medications.*

Students & their parent/guardian(s) are responsible for maintaining an adequate supply of prescription medication.

All students taking medication for chronic conditions will have an individualized health plan compiled by the School Nurse. This care plan will provide guidance for monitoring the student's health status and medication effectiveness.

How to Contact Us

Medical/Administrative Team:

Karen Duncan, School Nurse
kduncan@navajoprep.com
505-326-3571, ext. 116

Beverly Nelson, Health Assistant
bnelson@navajoprep.com
505-326-3571, ext. 115
Fax: 505-326-1834

Locations and Operations

The School Based Health Center (SBHC) is located in the BOSC building. Health Services are available to students by a registered nurse. Doctor appointments can be made on a weekly schedule during the school day.

Confidential Services for Minors

In accordance with NM State Law, students age 14 years and older may receive confidential health services (listed below) without the knowledge or explicit consent of their parent/guardian(s), provided that they sign an Informed Consent for Confidential Services form. These services include:

- *abstinence-based family planning education*
- *sexually transmitted infection testing & treatment*
- *crisis intervention*
- *contraceptives*
- *mental health counseling (individual and groups)*
- *alcohol & substance abuse counseling*

To ensure the safety, the NM law states that a student's confidentiality may be breached only in case of one of the following situations:

- The student poses a threat to him/herself or others (this is reported to the parent/guardian(s)).
- The counselor or other health provider determines that psychoactive medications are indicated (this is reported to the parent/guardian(s))
- Suspicion of child abuse and/or neglect (this is reported to Child Protective Services)
- During the medical visit or counseling session, an untreated potentially life threatening medical condition is revealed (this is reported to the parent/guardian(s))

Urgent/Emergent Health Referrals

For more severe medical incidents, referrals may be made to San Juan Regional Medical Center or a local urgent care clinic at the discretion of the School Nurse or by another NPS staff member if the School Nurse is not available. The signed Emergency Medical Authorization form serves as parental consent for health care in the event of an urgent or emergent situation. Attempts to contact the parent/legal guardian will be made to notify them of the situation. Whenever possible, the parent/guardian should transport the student to ER or urgent care of their choice. If the parent/guardian is not able to pick up the student in a reasonable amount of time, NPS staff will transport the student to the nearest emergency room or urgent care clinic. NPS staff will not transport to an Indian Health Services (IHS) clinic unless it is the closest facility. For this reason, it is strongly recommended that all students have health insurance. The parent/guardian is financially responsible for all fees incurred from such visits.

Navajo Preparatory School also complies with the State of New Mexico Concussion Law (page 24). *The NPS Concussion Policy is available at the SBHC.*

Routine Health Appointments

Parents/Guardians are responsible to transport students to routine health appointments, including dentist, orthodontist, physical therapy, etc. ***The school does not provide transportation to routine appointments.*** It is the parents'/guardians responsibility to inform the School Nurse about visits to other health providers if follow-up and monitoring is needed at the school.

Counseling & Mental Health Referral

If a member of the NPS staff suspects that a student is in need of individualized care, the concerned individual may seek assistance for the student through the School-Based Health Center by completing an internal referral form, either for medical or behavioral health. Students will need to have a SBHC parental consent form on file in order for the student to receive these services. The exceptions would be confidential services for minors in New Mexico and disciplinary referrals. Verbal consent may be attained with two witnesses. Students referred to the programs are strongly encouraged to participate in activities and sessions as deemed necessary by the counselor. All persons making referrals will be notified that the referral was received and appointments kept. Confidentiality is maintained to protect the student and only necessary information is shared with the faculty/staff, in order to provide quality and continuous care.

BIT Report and BIT Team

Behavioral Intervention Team (BIT) Report button will be located on the NPS website. This button can be used by any individual affiliated with NPS. This reporting is if you encounter a person of concern whose behavior interferes with academic instruction and/or is perceived as a safety concern to students, staff, or property.

The BIT Team has been created to provide caring, preventive, early intervention with individuals whose behaviors are disruptive or concerning. The BIT Team is an interdisciplinary committee of Navajo Prep professional staff who meet weekly and as needed.

LIBRARY MEDIA SERVICES

School Library

Naaltsoos Bahooghan

The Navajo Preparatory School Library is both a valuable and vital resource for students and staff. It offers a circulating collection (including a Native American collection) of both print and non-print resources and a computer lab for academic use. Several subscription databases are provided for on-campus and at-home use. Login information and passwords are available in the library.

Library Hours

Monday through Thursday 7:00 a.m. – 8:00 p.m.
Friday 7:00 a.m. – 4:00 p.m.

The Library policies and procedures are posted in the library and the school website which include the following;

- Neither food nor drinks are permitted in the library.
- Cell phones are to be silenced and proper etiquette maintained at all times.
- Acceptable Computer Use Policy and computer-related rules are strictly enforced.
- Patrons are responsible for all items checked out in their name.
- Lost or damaged materials must be paid for by the patron.
- Library materials are school property; therefore, misuse of library materials or violation of policies will result in loss of library privileges.
- Student ID's are required to checkout library materials.
- Signed passes from teachers are required for students visiting the library during regular class times.

Library Overdue Policy

Naaltsoos Bee I'í'áaqa Bibee Haz'áanii

Students are notified at least once per month of overdue library materials. Students may check out a book for two weeks with renewals for an additional two-week period at no cost. After the due date, there is a five-day window with no fine. Thereafter, there is a \$0.05 fine per day for every day the book is kept overdue. Patrons with overdue fines in excess of \$5.00 may not check out other items until the fines or replacement costs are paid. The maximum overdue fine per book is \$20.00. All lost materials are to be charged at the replacement cost or the original cost of the item.

TECHNOLOGY SERVICES

ACCEPTABLE COMPUTER USE POLICY

Beesh íichii íí nítse keesígíí ch'óó jíqí bi beehazáanii holó

(Internet/Intranet – Terms and Conditions of Use)

Educational Purposes

NPS is a Microsoft Windows supporting and operating environment. The primary use of the School's Computer Technology and Internet/Intranet services is to support educational and research endeavors consistent with the educational objectives of Navajo Preparatory School.

Network Drives

- Students are allowed to store files on a network drive that is accessible from any NPS network computer; this storage is platform independent.
- Due to possible virus transmittal to the network, students/staff are not allowed to store executable files on their Network Drive.
- Students are not allowed to store files (media/music, video, graphic, text, encrypted, etc.) that are obscene or violent in nature.

The Dean of Instruction will make the final determination on this type of material per incident.

- Student files are secure and cannot be accessed by other users as long as the account is properly used. Note, however, that the Network Administrator has complete access to network files and reserve the right to check these files to ensure that the School's Acceptable Usage Policy is adhered to.

Internet and Email

- Visiting internet web sites that contain obscene, threatening, or vulgar material (such as pornography or profanity) is strictly prohibited. If a site of the above nature is accidentally visited, you must promptly exit and notify a staff member who will notify the Network Administrator. The School does not allow access to social networking forums.
- Transmission of any material in violation of any national or state regulation is prohibited. This includes, but is not limited to: copyrighted material (for which you do not own the copyright), threatening or obscene material, or material protected by trade secret.
- Users must be aware that an e-mail account is a privilege, not a right. The Network Supervisor may close an account at any time for administrative reasons.
- The use of someone else's e-mail account is strictly forbidden and may result in the loss of e-mail privileges for one or both parties.
- Network Etiquette—Students are expected to abide by the generally accepted rules of network etiquette:
 1. Be polite. Never use abusive language in messages to others.
 2. Use appropriate language. Do not swear, use vulgarities or any other inappropriate language or graphics.
 3. Note that electronic mail (e-mail) IS NOT GUARANTEED TO BE PRIVATE. People who operate the system do have access to all mail. Messages relating to or in support of illegal activities may be reported to the authorities. Illegal activities are strictly forbidden. A rule of thumb: Do not write anything you would not want to see printed in the daily newspaper.
 4. Do not forward e-mail with malicious intent.
 5. Do not use the network in such a way that you would disrupt the use of the network by other users.
 6. Do not engage in "flaming," "spamming," or "chain letters."

Wireless Communication Devices

Niich' ih bee hane'í

The use and possession of cell phones and electronic devices will require a signed parental consent form. In order to respect the important work of the classroom and the teaching and learning environment, the following policy will apply during academic hours (7:55 am – 3:35 pm):

- Cell phones/electronic devices can be used in between classes and during lunch.
- Cell phones/electronic devices **must be turned OFF** when entering any classroom, office, library, study hall or mandatory after-school activity with the exception of an extreme emergency.
- Once inside any of the above-named locations, **cell phones and devices must not be visible under any circumstances** – even though they are OFF.
- Teachers may allow cell phone usage for instructional purposes only. Teachers will set expectations and monitor usage accordingly.
- If a cell phone, electronic device rings, vibrates, is used for any reason or is visible anytime during class time, the item will be confiscated.
- Refusal to surrender your phone when asked is defiance and can result in disciplinary action.

Personal laptops are required to be checked in with Network Administrator for anti-virus protection so as not to compromise the school's network. JetPacks, mobile wi-fi's, wireless routers and hotspots are strictly prohibited on campus. Violation of this policy will result in immediate confiscation and parent(s)/guardian(s) will be notified. The confiscated item will be released to parents/guardians only. Walkie-talkies are not permitted on campus.

Privileges

- The use of the Internet, and Intranet, and the use of all wireless communication devices is a privilege, not a right, and inappropriate use will result in a cancellation of those privileges. The Dean of Instruction, in consultation with the Network Supervisor, will deem what is inappropriate use and their decision is final. The administration, faculty, and staff of Navajo Preparatory School may request the Network Supervisor to deny, revoke, or suspend specific user accounts. This request will be forwarded to the Dean of Instruction, who will make a final decision on whether or not to act upon this request.
- Misuse of an Internet/Intranet account, email, or any wireless communication device could result in the loss of privileges. Since the loss of these privileges could affect a student's grade, it is important that students realize that, upon signing this Acceptable Usage Policy, they are taking the full responsibility of correct and responsible usage.
- Users must be aware that an Internet/Intranet account is a privilege, not a right, and the Network Supervisor may at any time need to close an account for administrative reasons.
- Allowing an individual who has lost their network privileges to use your account is forbidden and may result in the termination of your network privileges.

Security

Security on any computer system is a high priority, especially when the system involves many users. If you feel you can identify a security problem on the Internet/Intranet or that your account has been compromised, you must notify the Network Administrator verbally and followed by a written statement. Do not demonstrate the problem to other users. Attempts to logon to the network as a network supervisor or system administrator will result in cancellation of user privileges. Any user identified as a security risk may be denied network privileges.

Internet/Intranet Abuse and Vandalism

Internet/Intranet Abuse and Vandalism will result in cancellation of privileges and disciplinary action. Vandalism is defined as any malicious attempt to harm or destroy data of another user, Internet, Intranet, or any of the above listed agencies or other networks that are connected to any of the Internet backbones. This includes, but is not limited to, the uploading or creation of computer viruses.

Disclaimer

NPS is not responsible for the troubleshooting and/or repair of a student's personal computer or electronic device. Navajo Preparatory School, Inc., makes no warranties of any kind, whether expressed or implied, for the service it is providing. Navajo Preparatory School, Inc. will not be responsible for loss of data resulting from delays, non-deliveries, miss-deliveries, or service interruptions caused by the network's own negligence or a student's errors or omissions. Navajo Preparatory School, Inc. will not be responsible for damaged/lost/stolen/ vandalism to personal computing devices. Use of any information obtained via the Internet/Intranet is at your own risk. Navajo Preparatory School, Inc. specifically denies any responsibility for the accuracy or quality of information obtained through its services.

NPS Child Internet Protection Act – Compliant Internet Safety Policy

The following Internet safety policy addresses the basic policy compliance requirements of Child Internet Protection Act (CIPA) [Pub. L. No. 106-554 and 47 USC 254(h)].

Internet Safety and Cyber Bullying Policy

It is the policy of NPS to:

- Prevent user access over its computer network to, or transmission of, inappropriate material via Internet, wireless, electronic mail, or other forms of direct electronic communications.
- Prevent unauthorized access to other unlawful online content.
- Prevent unauthorized online disclosure, use, or dissemination of personal identification information of minors.
- Users must be aware that when they are on the Internet, they cannot always be sure of the identity of the person with whom they are communicating. People can misrepresent themselves. For example, someone may write that she is a teenage girl looking for pen pals when he is actually a middle-aged man, etc. You may not be able to verify that someone who claims to be an expert really is one. And you do not know how someone requesting personal information from you (in a survey, opinion poll, personal e-mail, etc.) may use it.
- Do not reveal personal addresses or phone numbers of individuals. Be cautious of sharing your own personal information as well. You do not know how it will be used or shared around the world
- Users may not use any device to harass another person or engage in personal attacks including discriminatory or prejudicial remarks that violate the school's safety policy against bullying and harassment (see School Safety Policy Against Bullying and Harassment).

Access to Inappropriate Material

To the extent practical, technology protection measures through web filtering shall be used to block or filter the internet.

As required by the Children's Internet Protection Act, blocking shall be applied to visual depictions of materials deemed obscene.

Inappropriate Technology Usage

To the extent practical, steps shall be taken to promote the safety of users of the NPS online computer network when using electronic mail, social media, instant messaging and other forms of direct electronic communications.

Specifically, as required by the CIPA, prevention of inappropriate network usage includes:

- Unauthorized access, including so-called "hacking" and other unlawful activities.
- Unauthorized disclosure, use and dissemination of personal identification information regarding minors.
- Harassment of other users (i.e., continuing to send electronic communications when the recipient has requested that you cease sending threatening messages).
- Destruction of or damage to equipment, software or data belonging to Navajo Preparatory School or other users
- Accessing or attempting to access computer networks or computer systems that you do not have permission to use.
- Violations of computer system security.
- Unauthorized use of computer accounts, access passwords or network passwords assigned to others.
- Use of Computer and/or network facilities in ways that impede the computing activities of others
- Use of computing facilities for personal or business purposes unrelated to the mission of the school.
- Violation of copyrights and software license agreements.

- Violation of another user’s privacy (media downloading of music, video, photos, etc.)
- Academic dishonesty (i.e., plagiarism or cheating)
- The downloading, storage and/or display of sexually explicit material (pornography) on school-owned equipment.

Education, Supervision and Monitoring

It shall be the responsibility of all members of the NPS staff to educate, supervise and monitor appropriate usage of the online computer network and access to the Internet in accordance with the policy, the Children’s Internet Protection Act and the Protecting Children in the Twenty-first Century Act. Procedures for the disabling or otherwise modifying any technology protection measures shall be the responsibility of the Network Administrator.

DINING SERVICES

Óít a’í Nída’ adííhígíí

The school provides healthy and nutritious meals three times each day to students. Meals are provided to faculty, staff and visitors at a cost of \$5.00/meal. Student meals are charged at a cost of \$3.25/meal.

Cafeteria Rules Are To Be Observed at ALL TIMES:

- Be on time for meals.
- Student ID’s are required to scan for meals. Students without ID’s will be required to purchase a new one. Each student is allowed one (1) tray. A second helping is allowed if food is available.
- Be courteous to others in the cafeteria.
- Keep trays and utensils inside the cafeteria.
- **Absolutely NO food or beverage to be taken outside of the cafeteria.**
- No horseplay, taking “cuts,” or running in the cafeteria.
- No throwing food.
- When finished with eating, return trays, dishes, drink containers, papers, etc., to the receptacles provided and appropriately place the chair away.
- All students using the cafeteria after normal hours due to activities are required to assist with the cleanup of the cafeteria.

Food or beverage must be disposed of (excludes bagged lunches) in the receptacles provided at the door upon entering any building. Students will not be permitted to have beverages (other than water) or food in any area other than the cafeteria. Food orders and deliveries (i.e. McDonalds meal, Sonic drink, cupcakes, Starbucks drink, pizza, etc.) to students from off-campus vendors are **not permitted** at lunch time and between the hours of 6:30-8:00 pm. They will ONLY be permitted on Sunday and Wednesday evenings. External to these approved days and times, any off-campus food deliveries to students are prohibited unless approved by the Dean of Student Life. **No outside food or drinks will be allowed in the cafeteria. Energy drinks such as Red Bull, Full Throttle, Monster, Rock Star, Amp, etc. are prohibited on campus and during all school activities off-campus in accordance with the School Health/Wellness Policy.**

Dining Hours

	Mon. – Friday	Friday
Breakfast	7:00 a.m. – 7:45 a.m.	
A&B Lunch	11:05 a.m. – 12:25 p.m.	11:10 a.m. – 12:30 p.m.
Dinner	5:00 p.m. – 7:00 p.m.	

TRANSPORTATION SERVICES

Hahgo chidiitsooí Nídadaijahígíí

The Transportation Department coordinates all school-sponsored travel. Transportation services are available on Sundays and Fridays for students, to and from school. Buses leave at 4:00 p.m. on Fridays unless otherwise announced. Additionally, buses leave at 5:30 p.m. from NPS for daily Shiprock route. and Bloomfield/Aztec route if needed All school policies apply while on the bus. In addition, the following must be observed:

- The bus driver will take attendance on Fridays and provide a copy to security before departure. Parent permission in writing must be obtained by the Dean of Student Life before a student is allowed to change bus route.
- Students can have no more than one backpack and one medium-size piece of luggage per trip. Baggage shall not interfere with school bus safety and availability of space for another student. Bus drivers will strictly adhere to this policy.
- Music volume must be kept low, preferably on a headset.
- Noise must be kept to an acceptable level as determined by the driver.
- Horseplay is not allowed.
- Take all of your personal belongings. Lost items will be taken to Security.
- Students must pick up all trash before leaving the bus.
- Immediately check in with school personnel upon arrival on campus.
- Exit doors on buses are to only be used in emergency situations.
- There are no bus runs on parent-teacher conference days.
- Please arrive early at pick-up and drop-off locations.

OTHER STUDENT SUPPORT SERVICES

SPECIAL EDUCATION SERVICES/CHILD FIND

Atchíní bánahónt'ágo óho'áá ígíí ha'nit'á

Child Find is conducted to identify current and potential students who might qualify for Special Education services. Students who are having academic, social or behavioral difficulties are provided interventions in the regular classrooms prior to referral for Special Education placement. Applicants with IEP's are given fair consideration within the admission policies of Navajo Preparatory School.

A coordinated effort is set up between the Academic Counselor, teachers, Dean of Instruction and school nurse to locate, identify, and evaluate children ages 14 through 19 who may be in need of special education services. Modifications and instructional interventions are made in the general education classroom before a child is referred to an evaluation team.

The Special Education program is governed by Federal guidelines, specifically those of the Individuals with Disabilities Education Act (IDEA).

A Special Education Coordinator oversees the services of students placed in the program. The school contracts with independent providers to ensure that evaluations are completed and related services are in place. Tutoring services are arranged for students.

A Study Skills class may be provided for additional support with the expectation that all students will graduate on a Standard Diploma. This is the only scheduled Special Education class. Teachers have access to a student's IEP through NASIS and work closely with the Special Education Coordinator in implementing accommodations. Parent/guardian(s) are encouraged to be involved in their child's education and the Special Education Coordinator is in regular contract to inform them of issues that might help or hinder student progress. Multi-Disciplinary Team (MDT) meetings are arranged to accommodate parent/guardian(s).

GIFTED & TALENTED PROGRAM

The purpose of the Gifted & Talented Program (G&T) is to identify gifted students in grades 9 through 12. The G&T Program will provide students with enrichment opportunities designed to address their specific needs in five (5) areas; Intellectual Ability, Creative/Divergent Thinking, Academic Achievement, and Leadership. These areas are outlined in the Bureau of Indian Affairs 25 CFR Rules and Regulations.

Candidates for the G&T Program are measured utilizing the following: Gifted and Talented Evaluation Scales (GATES), Northwestern Evaluation Association (NWEA) scores, Behavioral Rating Scales and a resume or portfolio of work/projects/past accomplishments. The criteria for placement in the G&T Program are outlined as follows:

Intellectual Ability

- Probable or Above on the Creative/Divergent Thinking portion of GATES.

Creative/Divergent Thinking (Any two of the following)

- Probable or above on the Creative/Divergent Thinking portion of GATES;
- Behavior Rating Scales; or
- Student resume or narrative of past accomplishments with any evidence.

Academic Achievement (Any two of the following)

- Top 10% of NWEA scores in any of the following: Reading, Math, Language Usage or Science;
- Probable or above on the Academic Achievement portion of GATES; or
- Grade Point Average of no less than 3.5 in grades 8 through the present grade.

Leadership (Any two of the following)

- Letter of Recommendation from entity outside Navajo Preparatory School (non-related to student);
- Probable or above on Leadership portion of GATES; or
- Student resume or narrative of past accomplishments with any evidence.

Visual/Performing Arts (Any two of the following)

- Portfolio of art work;
- Probable or above on the Visual/Performing Arts section of GATES; or
- Behavioral Rating Scales.

The G&T Programs are structured to develop leadership skills by combining knowledge and application using individual or group activities. Real world projects promote exploration of positive leadership, advanced technology, creative writing, student publications, visual art shows, interscholastic competitions and scientific processes to inspire career choices in mathematics, science and engineering. The following G&T Programs are offered by Navajo Preparatory School:

- Native Voices Debate Team;
- Naat'aanii Youth Leadership Council;

- Reading Across the Continents;
- "Scientifically Speaking"/AISES/Science Fair; and
- MESA

SECTION 504

Section 504 serves students in general education that do not quite fit in the Special Education program however are impacted by one or more of life's major functions that impeded their ability to attain an education comparable to student without disabilities. "Any person who (1) has a physical or mental impairment that substantially limits one or more major life activities; (2) has a record of such impairment; or (3) is regarded as having such impairment. Major life activities include walking, seeing, hearing, speaking, breathing, learning, working, caring for oneself, and performing manual tasks disability."

FLEX TIME

This time allows for a system of intervention and enrichment for all students during the school week. Students are expected to take advantage of this time for that purpose. Students may use this time to:

- Visit the classes they have missed due to an absence
- Make up or retake tests, do homework or get extra help from a specific teacher
- Students may be assigned to attend intervention or peer tutoring
- Attend an assigned lab to learn concepts that they might have missed or do not understand (writing lab, science lab, language lab, math lab, etc.)

Other opportunities for acceleration may also be available for students who are caught up and want to excel in their learning. The library will be open for students to use freely. A schedule of workshop presentations and campus enrichment activities may be offered at this time as well Staff may assign or require student attendance during this time. Abuse of flex time will result in a loss of this privilege.

ACADEMY

Freshmen Academy

Nahást'éeí dayóita'hígíí bá bee haz'áanii

The Freshman Academy is a program that is specifically designed to help all freshmen succeed in their first year and to provide a basis upon which they will build the skills needed to succeed in a college preparatory school. The Freshman Academy provides students with a structured environment geared toward a college preparatory school. Emphasis on work and study habits, personal counseling, and traditional Dine values are key elements of the Freshman Academy program

Sophomore Academy

Nééznaa dayólta'hígíí bá bee haz'áanii

The Sophomore Academy is a program that provides a transition for the students between the Freshman Academy and junior year. The Sophomore Academy will consist of Sophomore Teachers/Advisors. The objectives of the Academy are as follows:

- Provide structured academic assistance;
- Introduce varied career opportunities and exploration of the college process;
- Explore summer programs offered through the school; and
- Prepare for the ACT.

Junior Academy

The Junior Academy is a program that provides academic support for Juniors. This academy will emphasize academic intervention, ACT/SAT test prep, college planning and time management strategies.

Please see Before and After School Activity Schedules.

TUTORING SERVICES

Atchíní náaltsoos yot'á ígíí bee bíká ána'alwo'

Tutoring services are provided in a variety of areas: Language Arts, Math, Science, and Navajo Language. Tutors are available in the library from 4:00 to 8:00 p.m. Tutors may help with time management and study strategies, review and clarification of subject matter, test preparation, and assignments.

The Language Arts tutor can help students with revisions of papers. The tutor is NOT a drop-off proofreading service; instead, the student and tutor will work together to create a better paper. Outside of class assignments, the tutor will also offer advice on

Atsá Exhibition papers and college application essays.

Tutoring sessions will be mandated by the teacher if the teacher and/or parent/guardian feel that it is warranted.

Tutoring Schedule

Tutoring sessions take Monday through Thursday from 4:00 p.m. to 8:00 p.m.

Subject	Location
English/Writing	Library
Discrete Math/Geometry/Algebra I	Library
Algebra II/Pre-Calc./Calculus/Trig.	Library
Navajo Language	Mezzanine Lab

SUMMER ENRICHMENT ACTIVITIES

Shį́go O'ta'í Óhoo'aa'ngo Bee Bá Ahóót'ihígíí

The school encourages students to get involved with summer enrichment opportunities across the country. Many of the programs offer full scholarships while others cover all costs with the exception of travel. Summer enrichment provides opportunities to experience other cultures and environments for students to experience learning at another school, spend time on a college campus, and continue intellectual stimulation.

ATHLETIC PROGRAM

ATHLETIC/INTERSCHOLASTIC PROGRAM

Joot Bee Na'anéhígíí Bit Haz'áájí

The Navajo Prep "Fighting Eagles" athletic program is a member of the New Mexico Activities Association. The NMAA website address is www.nmact.org

To complement our academic program, the Athletic Department offers the following interscholastic programs for our students:

- | | | | |
|------------------|------------------|-------------|-------------------|
| 1. Football | 4. Cheerleading | 7. Softball | 10. Girls' Soccer |
| 2. Cross Country | 5. Basketball | 8. Baseball | 11. Debate |
| 3. Volleyball | 6. Track & Field | 9. Golf | |

The School also complies with the State of New Mexico Concussion Law. Refer to the NPS Concussion Policy available at the SBHC.

All athletes are required to pay a \$50.00 athletic fee for each sport in which they participate. Fees are due by the second week of the sport season.

PHILOSOPHY

Nida'anééjí Bin'dii'a'

Student athletes must acknowledge that academics always take priority over athletics. Participation in athletics is a privilege, not a right. Athletes must earn this privilege through dedication, desire, discipline, and passing grades. Without the pursuit of these, athletes can in no way do justice to themselves or the school. Student athletes are self-disciplined to be good citizens and students. In order to achieve athletic excellence, athletes must be involved in practicing good sportsmanship and playing fairly. A proud tradition of winning is maintained upon these principles.

The following athletic policies must be understood and agreed upon between the school, student athlete, and parent/guardian(s).

ATHLETIC GUIDELINES

Nida'anééjibee haz áanii

Academic Eligibility Requirements

T'áá Háishíí Joot Bee Nideeshneet Nízingo Éí Bi'ólta' Hazhó'ó Iip'íigoBee Báá Áhóótí' Eligibility will be determined by the following: A Student shall have a 2.3 grade point average with no F's, based on a 4.3 grading scale, each nine week grading period immediately preceding participation. Grades earned during a summer session must be placed on a student's transcript by the school registrar prior to the first day of the Fall semester in order for the course to be utilized for eligibility purposes. **A student with one (1) F is automatically ineligible.**

Academic Eligibility

A Student shall have a 2.3 grade point average with no F's, based on a 4.3 grading scale or its equivalent, either cumulatively or for the semester grading period immediately preceding participation. For students not eligible at the semester, the next nine week grading period can be used to regain eligibility. Grades earned during a summer session must be placed on a student's transcript by the school registrar prior to the first day of the Fall semester in order for the course to be utilized for eligibility purposes. **A student with one (1) F at semester is automatically ineligible.**

At the nine (9) week grading period a grade check will be done. If at the nine (9) week grading period a student has below a 2.3 grade point average or an F, the student will sit out of contest until the GPA is brought back above a 2.3 and with no F's. Student may still participate in practice, but not allowed to participate in contest. The Athletic Director will determine student athletic eligibility.

Cumulative provision: The cumulative provision may be applied only at the beginning of a semester. Only semester grades can be used, including all semester grades starting with the 9th grade year. The cumulative provision may not be applied if a Student has an "F" in the nine week grading period immediately preceding participation.

A grade of "INC" will be counted as an "F" for eligibility purposes. Eligibility status cannot be changed for an athlete once teachers have input grades. Extenuating circumstances will be considered if there is proof of errors and omissions. Within 7 days of grade period/posting a reinstated student must be approved by the Dean of Instruction.

Grade checks will be generated weekly. Students are expected to use their planner or grade check to be signed by all teachers, parent/guardian(s), RA's and coaches. Students are expected to bring up their grades to a C or better before the next grade check. Coaches are responsible for enforcement of this policy.

Student athletes participating in dual sports must have a 2.50 grade point average and must be in good academic standing.

Physical Examination

T'áá Háishíí Ólta' Joot Bee Bá Naashnée Dooleet Nízingo Éí Azee'íí'íní Ápsé Bits'íís Bá Yidinóot'ííi All athletes are required by the New Mexico Activities Association to have a signed physician's examination on file before they will be allowed to try out for or participate in an athletic program, including practice. Signed parent/guardian permission, emergency

contact and health consent forms are also required for the student to participate in sports. No student will be allowed to participate without these forms. Students are required to notify the coach of any medication he/she may be taking. All medications must be checked by the SBHC.

Attendance

Ts'ídá T'áá Álahí' Ólta' góne' Atah Hójíq Dooleeí Éí T'áadoo Jiisihigo

The student athlete must attend all scheduled practices and games. A student who cannot attend a practice or game must notify the coach prior to the practice or game by personal contact, phone call, or a written statement from the parent or guardian.

Excessive absences from classes, team practices, games or meetings will be cause for removal from the team. Coaches will determine the number of absences from team practices, games or meetings. Student athletes are required to be in school (the full day or until they leave for a game) the day of a game. Students who miss school the day of a game are not allowed to participate in a game that same night. The only exceptions are a written doctor's excuse or a death in the family. Athletes must make arrangements for any permitted make-up work in their classes with faculty prior to the absence(s).

Loss of Interscholastic Athletic Eligibility

Student athletes are required to abide by school and residential policies. Athletes in each sport are required to abide by the rules and expectations established by the coaches and athletic department. A "Player's Agreement" contract is read, understood, and signed prior to participation. A student athlete who does not adhere to the eligibility requirements stated on the "Player's Agreement" will lose the right to participate in the athletic program.

Any violation of a major school policy in the Community Handbook may result in loss of interscholastic athletic eligibility as determined by school policy.

Sport Changes

T'áá Ha'át'íish Bee Atah Nishíí Dooleeí Jinízingo,
Áádóó Bits'á Jígháago Dóó Nááná ta' Bitah Náájidáahgo

Student athletes are expected to maintain the highest level of sportsmanship because the athletic program is an extension of the Academic program.

Athletes may participate in as many sports for which they are eligible. If an athlete wants to participate in dual sports during the same season, he or she must petition in writing to each program coach who will then petition the athletic director for such permission. Athletes are strongly discouraged from quitting a sport while it is in season. If an athlete decides to quit a team, a written notice must be given to the program coach and a copy to the athletic director. If an athlete voluntarily quits a sport, he or she is ineligible to participate in another sport in the same season until the conclusion of that sport.

Any athlete and his/her parents and guardians who have concerns or complaints about rules, regulations, practices, playing time, participation, or any other matter must communicate in writing directly with the Athletic Director. Concerns should not be addressed to coaches during or after an event. Parent/guardian(s) should entrust school officials and coaching staff to have the best interest of their students and restrain from unruly behavior not conducive to sportsmanship and character building.

Required Documents

Athletes will need to submit the required documents before participating in sports:

- Physical Form
- Concussion Fact Sheet for Athletes and Parents
- Athlete/Parent Expectations
- Player/Parent Contact Information Form
- Athletic Participation & Insurance Waiver Form
- Concussion Certificate

Athletic Fee

An athlete joining a sport will pay an athletic fee of \$50.00 per sport **prior** to competition. The athletic fee will go back to the sport in which the athlete participates in. An athlete will not be able to participate in a sport if required documents and athletic fee is not turned into the Athletic Department.

STUDENT LEADERSHIP

Óíta'í T'áa Bíwáashindon Dóó Óíta'í Yee Ákihalta'

Navajo Preparatory School encourages students to fulfill their potential for leadership as stated in the School's motto "Yideeskagoo Naat'aanii"- Leaders Now and into the Future. Leadership is embedded within the academic and residential curriculum, where students learn critical thinking, problem-solving, and collaboration skills. Students learn to lead themselves and assume responsibility for their choices and actions. They are taught to embrace the School's mission to make a lasting impact in Dine' communities and the world around them. Many programs and organizations across the Navajo Preparatory School campus provide student leaders with the opportunity to make a positive difference. Students who have a desire to start a project, promote a cause, build or innovate ought to be inspired to lead those initiatives, take risks and seek support from faculty and staff. Mentorship and peer-learning is also encouraged as students grow within the leadership community.

The heart of student leadership at Navajo Preparatory School is the relationships (K'é) and harmony (Hozho) fostered throughout the campus community. Student leaders are guided by principles in the IB Learner Profile, and expected to model these values in their daily interactions with others, through classroom learning experiences, as well as extra-curricular activities. A spirit of collaboration, along with mutual respect and trust is vital to the development of leadership skills and will enable student leaders to be successful Now and into the Future.

STUDENT COUNCIL GOVERNMENT

Navajo Preparatory School Student Council Government is comprised of senate members and class officers who abide by a constitution. Student Council provides opportunities to develop leadership skills and promote a positive school climate. The Student Council represents the voice of the student body. Council meetings are open to the community.

STUDENT SENATE

The Student Senate is a prominent extension of developing student leadership and governance. The purpose of Student Senate is to promote the general welfare of the student body and Navajo Preparatory School. The Student Body President serves as an Ad-Hoc member of the School Board. Positions are elected at the end of each school year. In addition the Senate oversees various student-led clubs and organizations across the campus.

CLASS OFFICERS

Each grade level is represented by a team of executive class officers who are elected to manage and support their class. Those positions include: President, Vice-President, Secretary, and Treasurer.

STUDENT CLUBS AND ORGANIZATIONS

There are a variety of clubs and student-led organizations in which students can get involved. Students are encouraged to form clubs or organizations provided that they follow the guidelines adopted by the Student Senate. All club and organization presidents may have voting rights in Senate meetings. All fundraising activities by student-led clubs must be approved at Student Senate meetings.

NATIONAL HONOR SOCIETY

Students are nominated by Navajo Prep faculty to participate in the local chapter of the National Honor Society. Selection is based on four criteria: scholarship, leadership, service and character. Students are required to participate in service projects that benefit the school and community.

NATURAL HELPERS

Natural Helpers are selected by peers and staff who have shown a natural skill in helping others. The group is meant to be a network of support for students to seek advice and assistance from peer leaders. Students take part in training sessions to learn how to improve their helping skills and how to contact professional resources. Natural Helpers benefit from being involved in the community to support a positive school climate and promote Hozho.

NAVAJO PREPARATORY SCHOOL ROYALTY

The Navajo Preparatory School Royalty titles are Miss Hozho Naasha and Mr. Atsa Hastiin, who exemplify the essence and character of Native American culture and tradition. These members of royalty uphold the role as Native American youth in a global society, continually making efforts to preserve Native culture, display leadership and represent Navajo Preparatory School in a traditional manner of respect, pride, and honor. Royalties serve as ambassadors to the School.

COMMUNITY LIVING

STUDENT EXPECTATIONS

Personal Property

Ólta'ít'áadoo Le'é, Naalyéhé Ádaat'éI, hooghandéé' Nináyijáahgo

Our community holds high expectations of how we live and interact with each other, as the actions of one of us has an effect on us collectively. **Respect for self, others, property, authority, and honesty, both within and outside the NPS campus**, are the foundations for our standards of conduct.

Students are encouraged to leave large sums of money or items of great monetary or sentimental value at home. The school will not be responsible for the damage, theft, or loss of valuable personal items. Electronic games, stereos, radios, headsets, cellular phones, and any other audio equipment must not be used during the following: Classroom instruction, College Prep Advisory, Presentations, Banquets, mandatory after-school activities, study hall and detention times. Meal times and passing times are excluded from this policy. If student is in violation of this policy, an authorized school personnel has the right to seize said items and to notify the parents/guardians for release of items to parents/guardians.

Students should utilize lockers for backpacks and other personal items. Students should purchase a lock to secure their personal property. Students will not be allowed to leave items, luggage or sports equipment in the front office. Students should secure sports equipment with coaches or the Athletic Director.

Student ID's

Student Identification cards are issued to all students at the beginning of the school year. The purpose of student ID's is to provide quick identification of students, check out materials from the library, and scan for meals. It is the responsibility of all students to carry their ID on a daily basis. A \$5.00 replacement fee will be charged if a student ID is lost or stolen.

Lost and Found

Navajo Prep encourages all community members to turn any Lost and Found items to the Front Office during the School Year.

School Property

Ólta' Binchxó'í Baa áháyá

Students are responsible for any supplies, materials and/or equipment item supplied by the school. Vandalizing or damaging school property, including graffiti, will not be tolerated and will be subject to suspension or dismissal. Any damages incurred from moving school furniture will result in damage fees. All residents are encouraged to immediately report incidents of damage or vandalism to their Residential Advisor or Security. Students will be responsible for restitution for damaged or lost property. Residential students are responsible for their guest's behavior in the dormitory.

Assemblies

Ólta'í Bit Álah Aleeh

A school-wide assembly is held in which all students, faculty, and academic staff are required to attend. Parents/Guardians and community members are welcomed to attend. These assemblies consist of education information, motivational presenters, student activities and information. The Eagle Assemblies are occasionally coordinated by the Student Senate .

SCHOOL SAFETY & SECURITY

Ólta' Bisiláoshchíín

The Navajo Prep Security program operates under the direction of Facility Operations department for the safety and protection of the school community. A security officer is on-duty at all times. ID's are required to be shown by all visitors upon request of security officers on duty as denoted on entry signage. A roving security officer patrols the campus from 4:00 p.m. to 10:00 p.m. Sunday through Thursday. Please be aware the entire campus is protected by video surveillance for the protection of the school community. The west gate will only be open for special events.

School Resource Officer

The Farmington Police Department in conjunction with the Navajo Preparatory School, Inc. have an agreement to assign uniformed, full-time, certified police officers to the schools within the City of Farmington. The officers are considered School Resource Officers (SRO).

- The SRO is first and foremost a law enforcement officer. Duties of an SRO include: Promoting a positive image of the law; the importance of individual citizen responsibility;
- Increase children's understanding and respect for law enforcement;
- To interact with students, faculty, community, parent/guardian(s) and civil leaders to promote positive school and community relations;
- To promote an awareness of good safety practices through educational programs;
- To serve as a primary resource to children who are victims or suspects in unlawful or otherwise harmful activities in order that they may be deterred and protected from further harm.

The SRO will maintain availability to all students within the school complex. SRO's are considered school officials and have the same authority as school administration and teachers in conducting an investigation. As a school official, the SRO has the right to question

your child about his/her own conduct at school and in the investigation of alleged misconduct by other students, to question him/her about the conduct of others. There is no requirement to notify the parents/legal guardians of the student prior to questioning, however, the Navajo Preparatory School, Inc. and/or the Farmington Police Department SRO's shall make a good faith effort to notify the parents/legal guardians of the student. In the event the SRO is investigating a crime committed on or off campus, the exigency of the situation will determine the notification of parent/guardian(s). The Juvenile Miranda Rights may be read to the child by the SRO.

At the discretion of the school administrator or designee, the SRO may be asked to participate in conferences with students especially when potential delinquency is involved. The SRO may have input into intervention, preventive strategies and community resources that are available.

Student Vehicle Parking

Óíta'í T'áá Bí Bichidí Óíta'di Yee Nádaahgo Dóó Niná'áíłąągi

Day and residential students may drive personal vehicles on campus. In consideration of Navajo Preparatory School granting students the privilege to drive personal vehicles on campus, parent/guardian(s) and students are required to adhere to the following motor vehicle rules and regulations:

1. Student must possess and provide a copy of a valid driver's license, proper automobile insurance, and registration to the school prior to receiving parking privileges on campus. This paperwork will be validated by NPS Security Supervisor. If your insurance has been cancelled, so will your parking privileges. Students must park in designated areas only. Student must have permission from parents/guardians to drive to/from campus and follow the current student sign in/out procedures. (only students older than 18 years old are eligible for self check-out as approved by the Dean of Instruction).
2. Upon arrival on campus, all student drivers must immediately check in/out with security during academic hours and with residential advisor during non-academic hours.
3. Students may not be in private vehicles during school hours on campus.
4. Students are not allowed to transport other students in their vehicles unless written permission from each student's parent/guardian(s) has been received by the Security Department in advance and approved by the Dean of Instruction. This includes transportation to and from school.
5. Day and residential students must park in the East parking lot or in designated areas.
6. Speeding, hazardous driving, exhibition to speeding and any other unsafe conduct will result in immediate suspension of driving privileges.
7. Any student found bringing alcohol or illegal substances on campus with a vehicle will lose driving and parking privileges. Appropriate administrative and law enforcement personnel will also be notified.
8. The school has the right search a student vehicle at any time.
9. Students using a vehicle to "ditch" school or use the vehicle for any unauthorized absence from campus will lose driving and parking privileges.
10. A parent/guardian is still obligated to providing prior notification in the event that his/her child will need to leave campus.
11. Failure to comply with or violation of these rules, regulations, policies or creating an unsafe condition or students or faculty will result in the suspension or revocation of driving and parking privileges.

Navajo Preparatory School does not assume responsibility for damage, loss or theft of any vehicle brought on campus.

Visitors

Óíta'í T'áá Háida Baa Níyáago

Anyone who is not currently enrolled at or employed by the school is considered a visitor, including parent/guardian(s). **All visitors must register and receive a visitor's pass from Security. A visitors pass is required by the front office located in the Betty Ojaye Student Center.** Visitors are not allowed during study hall hours. Visitors must park in the visitor/faculty parking area. The campus is closed to visitors at 9:00 p.m. On special event nights, such as dances, all visitors must be off campus by 11:00 p.m. All visitors are required to show identification and provide a cell phone number upon entering the campus for school safety reasons. Guests are expected to abide by NPS policies.

Closed Campus

NPS is committed to providing a safe environment for our school community. For this reason, NPS maintains a closed campus. Only students and authorized staff are allowed to be on campus. All visitors to campus must enter through the security station to be permitted entry and must sign in at the Front Office and respective program office.

All day students must remain on campus during the academic day and may only exit the campus on the day student busses or alternative approved transportation. Day students that stay beyond the academic day must remain on campus and follow school rules. Residential dormitory students are not allowed to leave campus except on designated off-campus days. Only individuals authorized on a student's checkout form may check out students from the academic and residential programs.

Restricted Areas

Doo na'adáiigi

Due to security reasons, students are not allowed in the following areas:

1. Front office beyond the reception desk and residential advisors' offices
2. Unassigned dorm rooms and dorm rooms of the opposite gender

3. West of dorms (Cemetery, orchard etc.) Off-limits unless supervised by a staff member
4. Methodist Mission Property
5. Water canal
6. Airport Hill
7. Old Administration Building/East Stairwell/ South Fire escape
8. North of classroom complex
9. Construction areas
10. West Athletic fields after dusk
11. The examination area of the SBHC Office without proper supervision
12. Other areas as determined by the Dean of Student Life and/or Security
13. Stairwells of McDonald Hall and Dodge Hall

Fire Safety

Kq' Bits'aa Hasih Bik'ehgo Nitsáhákees Dóó Bibee Haz'áanii

Tampering with fire safety equipment is illegal and is subject to dismissal and restitution. (See *Major Policy Violation Consequences*). City fire code regulations prohibit smoking, burning incense, or candles in residential halls.

Emergency Drills

Nitsihwiinidélgo Bik'ehgo É'él'inií

Emergency drills will be conducted without notice throughout the year. During these drills students are to follow directions from staff. Fire escape routes are posted throughout the school facilities to ensure that everyone exits the buildings safely. All staff and students will remain outside the building until the "all-clear" signal is given. Attendance will be taken before anyone will be allowed back into the buildings.

Searches

Ólta'í Bił Na'ódlíhgo na'alkah

To ensure the safety of the NPS community, students and personal vehicles are subject to search when there is reasonable suspicion. Lockers, residence hall rooms, and all school and personal property therein are also subject to search at random or when there is reasonable suspicion. Random K-9 inspections will occur.

Authorized school staff reserves the right to conduct random inspection of a student's room or his/her vehicle or if there is reasonable suspicion that student health or welfare is at risk. When possible, prior notification will be given, and where possible, student(s) will be present during the investigation.

BEFORE/AFTER SCHOOL ACTIVITIES

Afterschool Activities

Ólta'í Bits'áadi Bee Ák'ehata'

The After School Activities at Navajo Preparatory School allows students to expand opportunities in recreational, cultural and community enrichment activities after the regular school day. We strive to provide safe, supervised environments where students can increase school and community involvement, physical activity, cultural awareness and social/life skills. Students are exposed to and taught life lessons such as responsibility, respect for others, teamwork, sportsmanship and goal setting. NPS students build friendships, competency and self-confidence through their participation in the various after school activities provided. Students are required to attend mandatory activities on Tuesdays and Thursdays who are not involved in athletics/clubs/etc.

Navajo Preparatory School Health and Wellness Afterschool program provides ample time for physical activity, education and provides consistent positive health messages from teachers and school staff. We encourage the support of the student's families in order to be more effective in promoting the health and academic success of our students.

Activity Eligibility will be based on grade checks (only applicable to After School Activities; mall trips, dances, movies, skating, bowling, club activities, etc.) **Students on the At-Risk/Academic Probation or who are failing one or more classes for two consecutive weeks will be restricted from extra-curricular activities.**

Please see Appendix for *Before and After School Schedules*.

COMMUTER (DAY) STUDENT LIFE

Ólta'í T'áá Hooghandéé' Ólta'go

Day students are encouraged to take full part in the school community, and it is hoped that many will form good and lasting friendships with residential students. Day students are accountable for all rules and regulations, including behavior in the dorms. It is strongly recommended that day students read over and become familiar with the section on Residential Life Policies in order to avoid unintentional violations of the dormitory rules.

Day students are required to check in and out with Security when entering and leaving campus daily.

Day students are required to participate in Residential and After School activities if they remain on campus from 3:35 pm to 8:00 pm. Students must report to the designated area for day students. Day students will not be allowed on campus after 8:00 pm unless they are participating/attending a School-Sponsored Event and are expected to remain in that designated area. Day students are only allowed in the designated Residential Common Areas. All day students must report to the Residential Advisor on duty if they will be in the Residential

Living area. If students are involved in afterschool activities, students must inform the Afterschool Activities/Wellness Coordinator. Commuter/Day students are a part of the school community and are encouraged to participate in all school activities for the entire school day. Day Students not in Academic Study Hall or At-Risk need to attend one of the following: (1) Afterschool School-Sponsored Activity; (2) Study Hall; or (3) Tutoring Services. Day students **MUST SIGN-IN** at a location if they are on campus after 3:35 p.m.

RESIDENTIAL LIFE PROGRAM

Da'nijahjí bíhazááji iiná

Residential Life Expectations

The mission of the Residential Living Program is to facilitate the mental, physical, emotional, social and cultural development of students by providing a safe, healthy, and supportive environment that recognizes individuality and independence.

Cleaning Responsibilities

Óta'í Aich'éhólzín Bąh Siláhígíí

Students are required to perform their assigned detail and to clean their room on a daily basis. Everyone is required to perform his or her daily cleaning duties by 7:00 am

Students will be graded on completion of cleaning duties on 9-week grading interval (same as quarterly academic grading reports).

Consequences per grading period if a detail is considered to be improperly completed:

- 1st offense: Verbal Warning and redo cleaning with inspection. If student fails to complete this request, this will result in 2nd offense.
- 2nd offense: One (1) day dorm restriction; redo cleaning with inspection; extra cleaning assignment and parent notification.
- 3rd offense: Three (3) days dorm restriction; redo cleaning with inspection; extra cleaning assignments; and referral to Dean of Student Life & Dean of Student Affairs for Insubordination Violation. Notify parents or guardians and review for dormitory status and possible transition to day- student status.

Cleaning supplies are provided by the residential program. No additional supplies are needed.

Residential Advisor

Do'nijahí bí na' nitiní

The Residential Advisor (RA) is in charge of the dormitory and is responsible for student supervision. At least one RA is on duty in each dorm during the time that students are not in academic classes. The RA is the major contact person for parent/guardian(s) and students. The RA's are responsible for providing a home environment and support for students. Parent/guardian(s) are encouraged to maintain close contact with the Residential staff and to notify staff of any concerns about their students.

Residential Behavioral Health Programs

The Student Support Specialist is responsible for planning and implementing a comprehensive behavioral health program for students that includes: prevention programs, support activities, early interventions and crisis response. A variety of individual and support groups are available. Parent/guardian(s) are responsible to notify the Dean of Student Life of any changes or situations that may be stressful for a student, such as family emergencies, illness, divorce, death, or abuse. This information is important to help us work with students and will be treated with confidentiality.

Residential Daily Schedule

Abínigo Óta'í Ch'éédahadziid

6:00 a.m.	Wake Up Call
7:00 a.m.	Dorm/ Room Detail Complete
7:15 a.m.	Students depart residential halls
7:30 a.m.	Detail Inspection Complete – Student and RA Signatures Required
7:30 a.m.	Residential Halls are closed
3:40 p.m.	Check in with Residential Advisor
3:00p.m.	All-Campus Wellness Activities (Every 1 st and last Wednesday of each month.)
4:15 p.m.	Athletic programs, club meetings or other activities
4:00-8:00 p.m	Residential Study Hall Hours for all residential students.()
	Option 1: Study Hall from 4:00pm to 5:00pm in the residential hall.
	Option 2: Study from 7:00pm to 8:00pm in the residential hall.
8:00 p.m.	Curfew Time (Freshmen/Sophomore/At-Risk) <i>Students must be in a designated activity area.</i>
9:00 p.m.	Curfew Time (Juniors/Seniors)
	Quiet Hours
10:00 p.m.	Lights out, all electronics must be turned off.

Residential morning schedule is to allow adequate time for students to complete cleaning responsibilities and to develop time management to attend class on time.

Students are required to check-in daily with their Residential Advisors before 3:40 pm, immediately after dinner and at curfew time. Bed checks will be conducted twice after curfew. Students are responsible for planning their entire day as the dorms are inaccessible during school hours. Exceptions will be made for emergency situations.

Students must clear the Residential Halls by 3:50 p.m. on Friday afternoon. For half- day schedules students must clear Residential Halls by 11:50 a.m.

Residential Progress Reports

Residential progress reports are mailed to parents/guardians at 9 week intervals (same as quarterly academic grading reports). The Residential Advisors will evaluate the students on compliance with dorm rules, completion of assigned duties, attendance at study hall, and respect for others.

Residential Leadership

Jizd11doo binanait'a7 sinil7g77

Students are encouraged to develop their leadership potential and to take an active part in the functioning of their dormitory. Each residential hall will select officers at the beginning of the school year. These officers will work with the Residential Advisors to plan and implement activities and programs for their dorm based on student interests and needs. Residential hall meetings will be held weekly or scheduled as needed.

Room Assignments

Room assignments will be made by the Residential Advisor in consultation with the Dean of Student Life. Students may request specific roommate assignments but these are not guaranteed. Roommates are expected to use good communication skills with each other. When they cannot resolve conflicts by themselves, staff will arrange for mediation. Requests for change of roommates are to be made with the Residential Advisor.

Tsásk'e bitnahazáanigií aahidit'áá higíí t'áá ałąą adaat'é

Students who live outside the daily bus routes have first priority to the residential halls. Should a vacancy occur in the dorm, a day student on the wait list can be accepted into the residential hall. At the end of the school year, said student will return to day student status. The student may then again request to be put back on the wait list for the following school year.

RESIDENTIAL GUIDELINES

Residential Room Check-In/Check-Out (Semester)

All students are responsible for maintaining the cleanliness of their residential room. Individual rooms are inspected and approved by Residential personnel and documented on appropriate check in/out forms. These forms are required to be on file prior to students leaving campus at the end of the academic year. A copy of the check in/out forms will be submitted to NPS Facilities Management.

Ats'áá' iildéehgo jizdáahdóó ch'éejínéehgo bik'ehgo é'él'í

Damages or vandalism that occurs in a community space and cannot be attributed to an individual(s) will be billed to all residents of the community. As a reminder, residents can be held responsible for the actions of their guests. All residents are encouraged to immediately report incidents of damage or vandalism to their Residential Advisor or Security.

Any damage incurred from personal adjustment of the furnishing including the beds will result in possible fines to cover the cost of repair or replacement.

- \$15.00 mattress cover replacement fee will be charged to the student's account.
- Specialize mattress cover replacement fee is \$75.00.
- All other damages to room will be assessed based upon check in/out status forms and inspection from Facilities Management.
- \$50.00 cleaning fee will be charged for rooms not properly cleaned upon check out. This will be assessed by the Residential Advisors and Dean of Student Life.

Residential Attendance

Parent/guardian(s) shall notify the Residential Department if a student will be absent from their dormitory three (3) or more consecutive days. If no parent/guardian contact is received from the parent by the third consecutive absence, the Residential Advisors will contact parents/guardians. When a student returns to school after an absence, a note of explanation must be signed by a parent/guardian or a doctor and submitted to the Residential Advisor for documentation purposes for BIE audit. A student may lose their dormitory privilege and become a day student for excessive absences.

Residential students are expected to communicate with their Residential Advisor upon leaving and returning to campus. They must be checked out by an authorized adult and verified with appropriate Identification cards. Students may not leave campus without being properly checked out at any given time. Any changes made to the checkout authorization must be made within three days with the school Registrar by the parents/guardians. Students who violate this policy will be considered truant and will receive disciplinary action.

Daily Student Sign-In/Sign-Outs

Outside of academic hours (3:35 p.m. – 7:55 a.m.) students may be signed out of the residential hall by authorized adult over the age of 21. The Residential Advisor will have to check to assure that the person is authorized to sign out the student. All dorm students returning to campus during residential hours MUST sign in at the residential hall with the Residential Advisor upon return to campus.

Residential Outings

Residential Student Life will host various Experiential Learning activities throughout the School Year. Students must maintain Activity Eligibility based on weekly grade checks. These activities include mall trips, movies, skating, bowling, etc.) Students on the At-Risk/Academic Probation or who are failing one or more classes by Grade Check will be restricted from extra-curricular activities.

Off-Campus Visitors

All visitors must check-in with school Security and Residential Halls with appropriate identification cards. Residential Advisors will verify if visitation is approved by parents/guardians. All visitations will be conducted in the residential commons area.

Residential Discipline

Da'nijahjí bik'eh hál'íinii

Students are expected to be responsible and positive members of the school community. Students are expected to maintain a respectful and positive attitude toward self and others as well as their physical environment. This includes respect for the privacy and belongings of others, respect for the residential staff, and respect for the dormitory building and furnishings.

Any violations of residential hall policies will result in appropriate disciplinary action. Residential personnel have the authority to assign extra details at any time.

Minor violations of residential rules and regulations will result in residential restriction that begins at 3:35 p.m. and will end at curfew time.

The following rules apply to students on residential restriction:

1. No visitors, except parents and legal guardians.
2. May only be checked out in case of an Emergency. If checked out, student must complete restriction upon return to dorm.
3. Phone calls only from parents/guardians or in an Emergency.
4. Required to surrender cell phone/electronic devices to the RA during dorm restriction.
5. No television
6. No extracurricular school activities including participation in sports.
7. Required to check in with residential advisor each half hour
8. Students may leave their dorm only for meals and study hall and must return immediately after these activities.

All minor disciplinary infractions that occur in the residential program will be handled by the Dean of Residential Student Life. All major policy violations will be routed to the Dean of Student Affairs. Parents/Guardians will be notified by the Dean of Student Affairs in the event that a student has multiple violations or may be considered a harm to self or others. A student's residential status can be revoked at any time as residential living is a privilege.

Curfew

E'e'áahgo Óta'í Yah Anáhádááhígíí

Freshmen/Sophomores and At-Risk curfew is at 8:00 pm and Junior/Seniors curfew is at 9:00 p.m. Sunday curfew is at 8:00 pm for all students. All students must be inside their assigned residential hall at this time. Lights out is at 10:00 pm.

On special event nights, such as dances, students must return to the dorm within 10 minutes of the time the event ends. Curfew times may be changed at the discretion of the residential staff. Students will be notified in advance of such changes by Dean of Student Life.

Residential Hall Privacy

Óta'í Nááná Lahdi Hootah Naagháago

Rooms/lockers are to be locked daily for security purposes. Students are responsible for locking the door to their rooms when they are not present. Students should never allow anyone to have their room key.

Students are not allowed to be in other student's dorm room under any circumstance. For safety reasons, staff may enter a room even if there is no response. Students of the opposite sex and from other residential halls are allowed only in the commons areas of the residential halls. Any student in the hallways or rooms of a student of the opposite sex will incur a disciplinary violation. Residential Advisors may exercise discretion to allow non-residential students in the commons areas.

Items prohibited in the dorms

The school reserves the right to approve all electrical appliances belonging to students due for fire safety and to prevent overloading on electrical equipment. Computers are required to use surge-protectors for their use in the dorm. The following items are prohibited in the dorms.

1. Personal hygiene items with alcohol content—such as mouthwash (Alcohol- Free mouthwash can be purchased at most stores.)
2. Aerosol cans
3. Animals of any kind, with the exception of special needs accompanying animals as addressed by a student's Special Education or Section 504 Individualized Education Plan (IEP).
4. Electrical appliances: Refrigerators, space heaters, electric blankets or mattress pads, television, space heaters, electric candles, evaporative coolers, coffee makers, Keurig's, hot plates, decorative lights, wireless routers, etc.

5. Space Heaters (NPS will provide as needed)
6. Open Flames (Candles, incense, lighters, and burning of traditional herbs)
7. Cooking/Kitchen appliances
8. Posters or other items that have pictures or sayings that are considered obscene, disrespectful, lewd and/or sexually suggestive.
9. No Tarot Cards, Ouija Boards, or related materials.

Medication (see SBHC Section for more detailed information)

T'áá Ha'át'íishjì Bits'ąą Hasihígíí

Students must check in all medication accompanied by a note from parent and doctor to the Residential Advisor and/or School Based Health Center (SBHC). This includes non-prescription or over the counter (OTC) medications. No medications will be allowed in dorm rooms. Students in possession with unregistered medication or OTC are subject to disciplinary policy. Any OTC or prescription medications that are not properly checked in will be confiscated. This is for the safety of all residents in order to prevent the abuse of any of these medications. Residential Advisors have first aid supplies and common OTC medications that may be given to students who have parental permission slips on file. Students should inform Residential Advisors of any illness or injury that occur in the dorm.

Traditional herbs or other healing items may be used appropriately in the dorms but MUST be checked in with the SBHC, with approval of parent, doctor or medicine man.

Supplements

Certain muscle-building and protein supplements can be damaging to a student's health and, therefore, permission to have these in the dorm will be at the discretion of the SBHC. Products containing creatine are not allowed. Any supplements MUST be checked in with SBHC. **Energy drinks such as Red Bull, Full Throttle, Monster, Rock Star, Amp, etc. are prohibited on campus and during all school activities off-campus in accordance with the School Health/Wellness Policy.**

Athletic Equipment

Athletic gear such as sports cleats are not worn in the dorms. Recreational equipment such as skateboards, bikes, and scooters are not to be used in the residential facilities but in designated areas outside the dorms. In accordance with the **New Mexico Child Safety Helmet Act** (Chapter 32A, Article 24 NMSA 1978), protective gear must be properly worn on campus for wheeled sports (skateboarding, biking, etc.).

Daily Room Cleaning/Inspections

Óta'í Nitééh Góne' Náníl'ijh

All rooms will be inspected on a daily basis. Rooms are expected to be clean and organized. The following will be checked during inspections: missing screens, clothes put away, bed made, trash can emptied, room neatness and cleanliness, furniture, fixtures and décor. All student lockers must be kept clean at all times and inspected each week. Rooms will be checked for items that are not allowed including medications, energy drinks, and any other items not permitted. Rooms/lockers/dressers must be locked daily for security purposes.

The School reserves the right to have a faculty or staff member enter the student's rooms at their discretion when deemed necessary, or if there is a reasonable suspicion that student safety is at risk. Where possible, prior notification will be given, and student will be present while school representatives investigate.

Off Campus Afterschool Employment

Ałchiní Ni'náda' íi'ta' dóó bik'íjì' nidaalnishigii bee haz'áanii

Residential students wishing to work off-campus/on-campus after school must gain approval from the Dean of Student Life, Dean of Instruction and parent/guardian **prior** to beginning employment. Students will only be eligible for off campus after-school employment if the student is in good academic standings. Failure to maintain good academic standings will result in immediate termination of employment and denial of student to leave campus. Transportation is the responsibility of the student and parent/guardian to and from the work site. An approved work schedule must be submitted to the Dean of Student Life on a weekly basis.

Wal-Mart Policy

Waa' Maá goo na'aadá bíbééhzáąnii

Student Policy on Wal-Mart trips:

1. Trips to Wal-Mart are allowed only after school hours and before curfew.
2. After school trips to Wal-Mart is considered a regular after school activity, therefore, any sponsor including Advisor, Atsá Mentor, Teacher and other staff members taking students to Wal-Mart must coordinate the activity with the Dean of Student Life.
3. Trips to Wal-Mart always require adult supervision and a sign-out sheet must be provided to Security before leaving campus. Sign-in is required upon return.
4. Trips to Wal-Mart is a privilege for student, therefore, students on At-Risk are not allowed to make trips to Wal-Mart.
5. All school rules apply when shopping at Wal-Mart. Students will lose privilege to go to Wal-Mart if they violate the Wal-Mart Trip Policy, including:
 - Shoplifting – Student will lose privileges to Wal-Mart for the entire School year.
 - Truancy – If the student is truant while on the Wal-Mart trip, the student will lose privileges to Wal-Mart for the entire semester.
6. All school rules apply when shopping at Wal-Mart (i.e. no tobacco and alcohol purchases and no visiting in the parking lot with non-school people).

7. Trips to Wal-Mart may be scheduled by the Residential Program and supervised by Residential Staff.
8. Violations of the Wal-Mart policy will constitute disciplinary procedures in accordance with School Policy.
9. The trips are considered privileges and can be taken away at any time.
10. All food and drink purchases must follow school wellness policy.

Residential Dorm Essentials

1. Security of Valuables

Honaalye' ílǫ́nigíí baa áháyá

Two combination locks must be provided by students before they check into residential halls at the start of the semester and maintained throughout the school year. Students must make sure their dorm rooms/lockers are locked when unoccupied. All items will need to be properly secured. Students will be responsible for the proper storage of valuables, for example, wallets, cash, iPads, iPods, cell phones, jewelry, etc. NPS is not responsible for lost or stolen items. An authorized school staff has a right to inspect and review items under lock and key in the presence of the student. Each residential hall has a safe located in the Residential Advisors office. Students who bring large amounts of money or other valuables to campus should request that they be secured in the safe. NPS residential program is not responsible for lost, stolen or damaged items.

2. Dorm Snacks

All snacks must be kept in a storage container for health and safety reasons. Snack must adhere to the Wellness policy.

3. Keys

Da'nijah góne' bee aanídítǫ́hí baa áháyá

All residents are issued a room key. Each resident is expected to have his/her key with him/her at all times. Students should never allow anyone else to have their room key. Residents are assessed a fee of \$1.00 if the residential advisor is required to unlock the room. Rooms will only be unlocked 5 times, then you must buy a replacement key. Lost or stolen keys must be reported to the residential advisor immediately. A replacement charge of \$10.00 will be assessed for all lost or stolen keys. If a lost key is found it must be returned to the Facility Management Office.

4. Laundry

Ólta'í Bi'éé' NÍdayiigisgi

Residential halls are equipped with coin-operated washing machines and dryers for student convenience. The cost per load is \$1.00 per washer and \$0.50 per dryer. NPS is not responsible for unattended laundry. The laundry facilities will be closed at 9:30 PM. Laundry detergent and additional supplies are not provided. Bleach will be checked in by student with RA to monitor safety.

5. Mail

Ólta'í Naaltsos Bich'í' Ál'íhgo

Mail is distributed daily to the students by the RA. Students receiving mail must have the dorm listed on the envelope.

Example:

*Mr. Joe Student
Zah Hall
Navajo Preparatory School
1220 West Apache
Farmington, NM 87401*

DISCIPLINARY GUIDELINES

Ólta'í Beehaz'áanii Doo Yee a'íhgoó Bik'ehgo Bee Baa Hwinip'íh

Philosophy and Values

NPS believes in principles of K'e (a person's positive relationship with everything), restoring with Hozho (harmony/balance/peace). All students have the right to be educated in a positive learning environment free from disruptions. Students are expected to exhibit appropriate conduct that does not infringe upon the rights of others or interfere with the school program while on school grounds, to or from school, while at school activities and while on bus transportation.

Students are accountable for every behavior discussed in the school discipline policy. Behaviors discussed are for advisory purpose and are not a complete list of behaviors which may result in discipline. Navajo Preparatory School will foster cooperation, respectful and responsible behavior between students and staff by directly teaching and providing positive and corrective feedback.

Resolution of Student Conflict through Navajo-Peacemaking

Binahjí Ólta'í bil anáhóót'í bee

The School may use Navajo Peace-making strategies as an option for conflict resolution to promote Hozho and K'e within the community. Students must first attempt to resolve the conflicts with the immediate school community member. A conflict resolution mediator will conduct a mediation session in an effort to resolve the conflict. The conflict resolution mediator will provide documentation of what the party(ies) has agreed to do to resolve their conflict. **The mediator will be provided a written agreement signed by both parties.**

Minor Policy Violations

Teachers and staff members are to complete a referral form when misbehavior cannot be handled within the classroom/dorm setting. Disciplinary referrals are to be submitted to the Dean of Student Affairs (DSA). The DSA will submit the incident report in the NASIS system (Infinite Campus). Referrals will be addressed by the discipline committee or administration.

Minor policy violations will result in appropriate disciplinary action and notification of parents/guardians. Referrals will be made only when the misbehavior cannot be handled within the classroom/dorm or if the misbehavior is severe enough to warrant an immediate referral. Parent/guardian(s) will be asked to review and address these minor violations with their student(s). **Minor violations include (but are not limited to):**

- Dress Code
- Excessive Study Hall/Homeroom absences
- Inappropriate use of electronic devices
- Tardiness
- Ditching (on campus)
- Public Display of Affection
- Abuse of Property
- Incomplete Residential Duties
- Classroom Disruptions
- Skateboarding in Prohibited area/time
- Abuse of school property
- Failure to follow safety rules
- Inappropriate language
- Non-Compliance with initial requests
- Other deemed "Minor" by Administrator or Discipline Committee

Minor incidents will be addressed by supervising staff and, if necessary, in coordination with the Dean of Student Affairs or school administration.

Major Policy Violations

Óta' Ts'ídá Agháadi Bibee Haz'áanii

An understanding of the following policies is necessary to ensure the safety and well-being of every member of the school community. Violations of a major school policy will result in disciplinary action and notification of local authorities when appropriate. "Local authorities" refers to, but is not limited to, the Farmington Police Department, which will play a role in the determination of criminal as well as legal actions outside of the School's jurisdiction. The school reserves the right to dismiss a student after a first offense depending on the severity of the violation.

Multiple Disciplinary Reports

Díkwíídóó shíí óta'í baa hóóne' dóó naaltsoos bee

Three (3) minor disciplinary reports filed within the current school-year for infractions, of any combination of rules and regulations, will be considered a major policy violation.

SPED Discipline

Special concerns exist in disciplining students with identified disabilities. To protect the rights of students with disabilities, notice and hearing rights are provided through SPED services. If a SPED student imposes immediate threat to harm self or others, the building administrator can temporarily suspend student up to 10 days. Determination will be made by the building administrator IF the student's behavior is a manifestation of the student's disability.

Suspension

Biniinaaní Hojiiloogo Olta'Jisihgo

Students serving suspension will receive an Unexcused Absence and will not be allowed to make-up work or missed work.

Firearms, Weapons, Explosives and Fireworks

Óta' Be'eld —Dóó T'áadoo Le'é Bee Ti' Doolníil dóó Naaltsoos

Firearm or guns of any kind which includes BB guns, pellet guns, air powered guns, or any weapon or anything that resembles or can be made to resemble a weapon (gun), that shoots a solid projective, explosives, bows and arrows, knives, any sharp objects, slingshots, chains, or weapons of any kind, are NOT allowed on campus at any time. Fireworks of any kind are not allowed on campus at any time.

Alcohol – Use, Possession and Distribution

Óta'I Óta'di Tó Tsi'na'íitáI

The School is an alcohol-free campus and will not tolerate the use, possession, and/or distribution of alcohol which is a violation of state and federal law. The Farmington Police Department will be contacted to investigate. This violation may be grounds for immediate dismissal.

Illegal Substances and Drug Paraphernalia

Nát' oh tsi'nda'iiláhigii

The School is a drug-free campus and will not tolerate the use, possession, or distribution of any illegal substances or drug paraphernalia. Parent/guardian(s) will be held responsible to have a forensic test administered if his/her student is alleged to be in violation of this policy. The Farmington Police Department will be contacted to investigate. This violation may be grounds for immediate dismissal. All visitors for all occasions (athletic or non-athletic special events) are required to also adhere to these policies. For purposes of this policy, "drugs" shall include, but not be limited to:

- All dangerous controlled substances prohibited by law.
- Any prescription or over-the-counter drug, except those for which permission to use in school has been granted by the SBHC.
- Hallucinogenic substances.
- Inhalants.

Tobacco Products

Nát'oh cho'íih

All students, parents, staff and visitors will not possess, smoke, distribute or use tobacco products in school buildings, on school grounds or buses, or at school-sponsored events. Tobacco is defined as commercially created products such as cigarettes, smokeless tobacco, e-

cigarettes and chewing tobacco.

Tobacco/Nicotine Policy

Tobacco use is the single most preventable cause of death. Therefore, the School is a tobacco-free school and our goal is to keep students tobacco-free and keep tobacco use off school property, out of school buildings and school sponsored events. Therefore, no sponsoring by any tobacco company will be authorized.

The use of tobacco on school property is a major school violation; however, the School offers a tobacco diversion program over school suspension. The SBHC provides a student assistance program for students who use or violate the tobacco-use policy an opportunity to participate in an educational program that can lead to positive behavioral health change.

The violation of the tobacco use policy will lead to the parent/guardian being notified with a student referral to the SBHC.

Sexual Misconduct and Inappropriate Behavior

Adá hoóqni K'égo dóo izhdilch'idah

The School respects healthy relationships which maintain respect for self and others. The school campus is a public environment and public facility. Students are expected to behave in good taste and have respect for others and self by not engaging in displays of overt sexual behaviors such as hugging, kissing, touching with same sex or opposite sex member. Inappropriate public or private displays of affection (PPDA), hickies, excessive contact and sexual intimacy will not be tolerated. This also includes possession of pornographic materials and intentionally or unintentionally exposing his or her underwear or body parts that normally should be covered by clothing. Students are not allowed in the dorm room of the opposite sex. Students who engage in sexual misconduct and inappropriate behaviors are subject to disciplinary measures including notification of parent/guardian.

Truancy (Off Campus)

Óta'í T'áadoo Ádah halne'é Óta'déé' Dah Diiyáago

Students who leave campus for any reason without proper authorization are considered truant. Day students are not allowed to leave campus during school hours.

Integrity

Doo Hona'adlo' Da

"To have integrity means that you do the right thing and make the right choices, even if nobody is watching." Students are encouraged to live a life based on honesty and integrity, by knowing who they are and what they stand for. Honesty and truthfulness are virtues, and students must police themselves on a daily basis. Having personal integrity is an important leadership quality for "Leaders Now and Into the Future – "Yideeskáágóó Naat'áanii".

Cheating, lying, stealing, falsifying information, forgery and deceiving others are examples of actions that will compromise your integrity and have consequences. This includes misusing technology or other devices resulting in academic dishonesty and malpractice(s).

Fire Alarms, Safety Equipment and School Threats

Kq' Bits'aa Hasih Bik'ehgo Nitsáhakees Dóo Bibee Haz'áanii

Students will not tamper with the fire alarm system, fire equipment including emergency exit lights, smoke detectors, fire extinguishers, sprinklers or make inappropriate emergency phone (911) calls. Bomb /School threats and tampering with safety equipment are illegal acts and will be reported to the local authorities.

Computer Misuse

Computer cho'íhgi bibee haz'ánigíí

All students are required to sign and abide by the "Navajo Preparatory School Computer Acceptable Usage Policy." Any storage, use, or transmission of pornographic materials, obscenity, profanity, inappropriate text files, dating (hook-up) sites and text-encoded files or files dangerous to the integrity of the network is prohibited

Theft / Vandalism

Óta'í Ani'íhgo

Theft and vandalism are unacceptable and will not be tolerated. Respect for school and other people's property is an essential component of our community. Students will be responsible for restitution for stolen, damaged or lost property.

Defiance / Insubordination / Profanity

Óta doo bik `eh honish'í

Any student whose actions are openly defiant and characterized to be disobedient and resistant to authority will be subject to disciplinary action.

Hostile Environment

Adiláá dóo dóóit ílí ké nitsáhakees dóo yat'í

Hostile Environment is unwelcome conduct by a person that is sufficiently serious, persistent, or pervasive, so that it affects another person's ability to participate in or benefit from the school program or activity by creating an intimidating, threatening, or abusive environment. Conduct contributing to a hostile environment might include:

- Sexual propositions communicated via email, in person, graphically;
- Verbal expressions of sexual nature including comments about hair, dress, physical appearance, or sexual activities;
- Sexually suggestive jokes, innuendoes, sounds, gestures, or leering;
- Anecdotes, questions, or comments about sexual activities;
- Use of sexually suggestive objects, articles, tapes, pictures, or other materials;
- Any persistent and pervasive pattern of sex-related conduct that is offensive;
- Deliberate indifference by supervisory personnel in responding to allegations of harassment;

- Humiliating tricks or ridicule;
- A negative rite of passage to a particular individual, group, etc.; and
- Deliberate use of information and communication technology with intent to harm others.

The School and community have a responsibility to protect against harassment and hazing. This responsibility extends to the school's athletic programs. The School has a policy against discrimination that includes grievance procedures for prompt and equitable resolution of harassment and hazing.

SCHOOL SAFETY POLICY AGAINST BULLYING AND HARRASSMENT

Óita'í Ihadáahgo Dóó É'éts'ihgo

Harassment: According to New Mexico State Statute 30-9-13, harassment is **Unlawful** and a **Misdemeanor** (30-3A-2A), and according to Federal Statute under sec. 703 of Title VII, charges will be reported immediately to local law enforcement and Social Service Agency.

The School does not tolerate bullying or harassment and such conduct will result in disciplinary action up to and including suspension and/or expulsion from school. Any student bullying, threatening, intimidating, harassing or fighting with another student or with school personnel, either verbally (cursing &/or vulgarity) or physically, will be subject to disciplinary action. Sexual harassment in any form is unacceptable and will be dealt with according to disciplinary procedures.

All members of the school community are committed to ensuring a safe and supportive environment based on the school's core values of K'e (traditional family relationships), learning, respect and cooperation. At school, all students have the right to: human dignity, feel safe, be respected, be valued, be different, be free of harm and be protected against abuse.

Bullying and harassment is an act of aggression by a student or a group of students with the intent to ridicule, humiliate, intimidate and cause embarrassment, pain or discomfort to another student. In a nutshell, *bullying is a deliberate, conscious desire to hurt, threaten and frighten someone.*

Retaliation is a form of intimidation, reprisal or harassment directed against a student who reports an instance of inappropriate or unacceptable behavior, provides information during an investigation of inappropriate or unacceptable behavior, or witnesses or has reliable information about inappropriate or unacceptable behavior. Retaliation of any sort by any person, including parent/guardian(s), is not permitted.

Forms of Bullying

- **Physical bullying** – pushing, tripping up, kicking, hitting, punching, pinching, biting, forcing others to do things that they don't wish to do, taking or damaging other's belongings, demanding money, silly pranks, hazing
- **Verbal bullying** – teasing, mocking, taunting, abusive comments about appearance, verbal threats, threatening and embarrassing gestures, insulting family members, genders, race and religion, name calling, writing nasty letters about someone, stealing, hiding, damaging or destroying property
- **Psychological bullying** – spreading nasty rumors, deliberately excluding someone from activities, influencing/telling others to dislike someone, rude gestures and trying to dominate a person.
- **Cyber bullying** – actions that use information and communication technologies to support deliberate, repeated and hostile behavior by an individual or group, that is intended to harm another or others; use of communication technologies for the intention of harming another person; use of internet service and mobile technologies, such as web pages and discussion groups as well as instant messaging; or SMS text messaging with the intention of harming another person. Harassing another student off-campus can result in disciplinary action upon return to campus.

Harassment and bullying can cause distress, lower self-esteem, reduce self-confidence, affect school performance, cause absenteeism, result in withdrawal from school and discourage participation in school activities.

Examples of different types of harassment

The examples given below, which include unacceptable physical and verbal conduct, are not exhaustive.

- Sexual harassment: Examples include unnecessary touching, jokes of a sexual nature, inappropriate use of suggestive visual display, and other intimidating behavior.
- Racial harassment: Examples of racially motivated actions and behavior including inappropriate questioning about racial or ethnic origin, offensive graffiti and intimidating behavior such as threatening gestures.
- Personal harassment: Examples based on lack of tolerance of personal difference include making fun of personal circumstances or appearance.
- Harassment on grounds of sexual orientation: Examples include homophobic remarks or jokes, threats to disclose sexuality and intimate questions about sexual activity.
- Harassment of disabled people: Examples that undermine the dignity of people with disabilities including discussion of the effects of a disability on an individual's personal life, uninvited touching or staring, and inappropriate questioning about the impact of someone's disability.
- Age harassment: Examples include derogatory age-related remarks and unjustifiable dismissal of suggestions on the grounds of the age of the person.
- Stalking: Examples include leaving repeated or alarming messages on voice-mail or e-mail, following people around or asking other students for personal information.

- Hazing: Examples include any imposition of strenuous, or humiliating physical training, rituals and/or initiations

Complaint Process

Students and/or their parents or guardians may file written reports of conduct that they consider to be bullying. Such reports shall be reasonably specific as to the actions giving rise to the suspicion of bullying, including time and place of the conduct alleged, the number of such incidents, the target of such suspected bullying, and the names of any potential student or staff witnesses. Such reports may be filed with any teacher, administrator or staff member and they shall be promptly forwarded to the Dean of Student Affairs for review and action. Any staff member who receives a complaint shall immediately report to the Dean of Student Affairs.

Students have a responsibility to report acts of bullying to any staff member.

Any report of suspected bullying behavior will be promptly investigated. If acts of bullying are verified, prompt disciplinary action shall be taken against the perpetrator in accordance with Major School Violation Policy, Community Handbook.

Notification

The school administration will notify the parents or guardians of student(s) who committed a verified act of bullying. The parents or guardians of students against whom such acts were directed will also be notified.

Major Policy Violation Consequences

Díí bik'ehgo óta'í bá nahwiit'aah

Major Rules Violation	Immediate Action	1st Offense	2nd Offense	3rd Offense
1. Firearms, Weapons, Explosives & Fireworks	Confiscate Item(s) Notify Police Notify Parents Notify Security Notify Fire Dept. Expulsion Incident Report	Dismissal		
2. Alcohol Use, Possession, and/or Distribution	Confiscate Item(s) Notify Security Notify Police Notify Parents Student sent to Emergency room or sent home Up to 5 days suspension, Subject to loss of residential privileges, upon returning to campus-must have proof of an assessment or appointment with counseling professional	Parent Conference prior to returning, Completion of Alcohol Education Program eggplan	Dismissal	
3. Illegal Substance & Drug Paraphernalia	Confiscate item(s) Notify Security Notify Police Notify Parent Forensic Evaluation Student sent to Emergency room, Counseling Referral_ must have proof of an assessment or appointment with counseling professional. Up to 5 days suspension, Subject to loss of residential privileges Incident Report, Random drug screening	Parent Conference prior to returning, must have proof of an assessment or appointment with counseling professional, Behavioral Contract or Subject to Dismissal	Dismissal	
4. Tobacco Products	Confiscate item(s) Notify Parents Incident Report Counseling Referral	Completion of Tobacco Products Education Program must have proof of an assessment or appointment with counseling professional, in accordance with NPS Tobacco/Nicotine Policy	Up to 5 days suspension, Completion of Tobacco Products Education Program, Behavioral Contract or Subject to Dismissal	Dismissal
5. Off Campus Truancy	Notify Security Notify Police Notify Parents Incident Report, Up to 5 days suspension Subject to loss of residential privileges	Parent Conference prior to returning. Subject to Dismissal	Behavioral Contract or Subject to Dismissal	Dismissal
6. Sexual Misconduct	Notify Parents, Incident Report, Counseling Referral, Up to 3 days suspension, Subject to loss of residential privileges	Parent Conference prior to returning. Behavioral Contract or Subject to Dismissal	Dismissal	

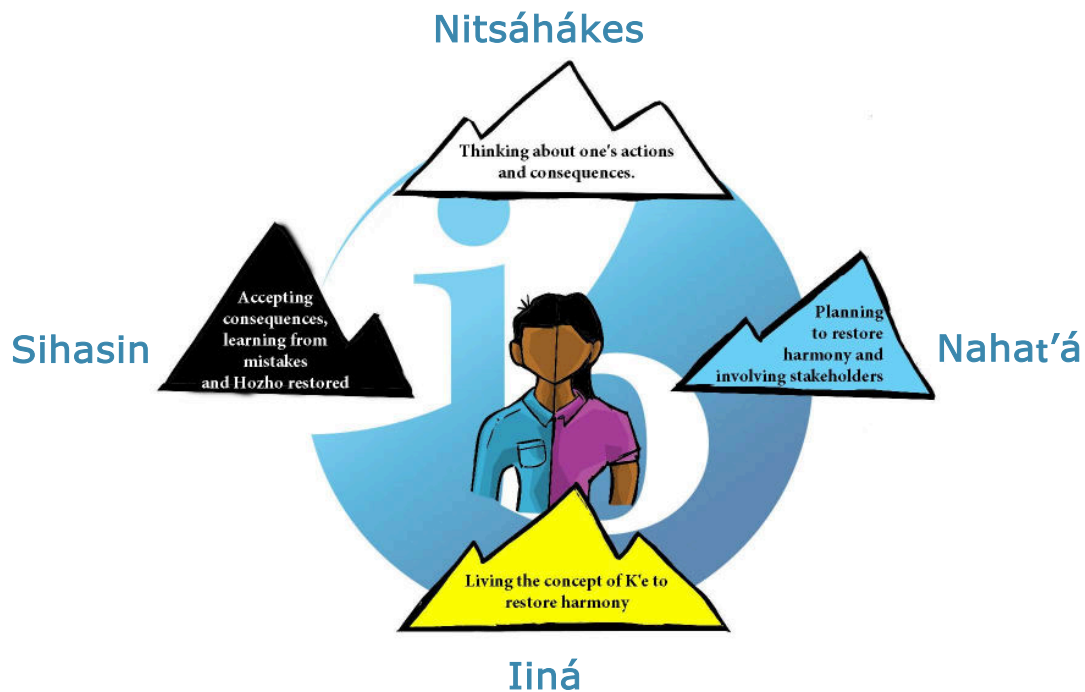
Major Rules Violation	Immediate Action	1 st Offense	2 nd Offense	3 rd Offense
7. Integrity	Student/Teacher Conference Notify Parents Incident Report Up to 3 days suspension Academic Counseling Subject to Dismissal	Parent Conference prior to returning. Subject to Dismissal	Behavioral Contract or Subject to Dismissal	Dismissal
8. Theft/Vandalism	Confiscate Item(s) Notify Security Notify police Notify Parents Incident Report Up to 5 days suspension Restitution Counseling Referral	Parent Conference prior to returning, Subject to Behavioral Contract or Subject to Dismissal	Dismissal	
9. Defiance, Insubordination, Profanity	Student/Personnel Conference Up to 5 days suspension Counseling Referral Notify Parents Incident Report	Parent Conference prior to returning or Subject to Dismissal	Behavioral Contract or Subject to Dismissal	Dismissal
10. Bullying, Intimidation, Harassment, Fighting, Hazing, Verbal Abuse	Notify Security Notify Parents Incident Report Charges Filed Up to 5 days suspension, Subject to loss of residential privileges	Parent Conference prior to returning, Behavioral Contract or Subject to Dismissal	Dismissal	
11. Fire Alarms, Safety Equipment, Bomb and School Threats	Notify Parents Notify Security Notify Police Restitution Incident Report Dismissal	Subject to Dismissal		
12. Intranet / Internet Abuse Vandalism	Notify Parents Incident Report Suspension of computer privileges Suspension up to 5 days	Parent Conference prior to returning or Subject to Dismissal	Dismissal	
13. Cyber Bullying	Notify Parents Suspension of Internet Access Up to 5 days of suspension Subject to dismissal	Parent Conference prior to returning or Subject to Dismissal	Dismissal	
14. (3) Multiple Minor Violations or Major Disciplinary Reports	Student/Parent Conference Incident Report Up to 3 days Suspension	Parent Conference prior to returning or Subject to Dismissal	Behavioral Contract or Subject to Dismissal	Dismissal

DISCIPLINE PROCEDURES & PROCESSES FOR MAJOR VIOLATIONS

Methods for addressing discipline is based on the principles of Dine' Traditional Peacemaking (Hózhóji Naat'aah) and Restorative Justice that are rooted in the traditional customs, methods and wisdom of the Diné people.

The IB Learner Profiles are holistic and are also used to restore discipline in mind, body and spirit:

1. **INQUIRERS** - Na'idíkid dooleet
2. **KNOWLEDGEABLE** - Bił ééhózin dooleet
3. **THINKERS** - Bił chohoo' łgo nitsékees dooleet
4. **COMMUNICATORS** - Bizaad hahóózhqod dooleet
5. **PRINCIPLED** - Hòyáá dooleet
6. **OPEN-MINDED** - Táá atsoní yaa ákonízin dooleet
7. **CARING** - Bee ajooba'hólqo dooleet
8. **RISK-TAKERS** - Yá'át'éhígíí yee na'idínítaah dooleet
9. **BALANCED** - Hózhóogo naagháa dooleet
10. **REFLECTIVE** - Íhoo'aah yaa ntsénákeesgo yee siihdinzin dooleet
11. **COURAGEOUS** - T'áá atsoní yich'j' ha'ólnii dooleet
12. **SPIRITUAL** - Ádáhodízin dóo hodísin dooleet



Nabikiyaati Committee (Talking Things Out)

The Nabikiyaati Committee is a committee comprised of NPS staff members who evaluate discipline matters and create strategies for addressing student issues. The Dean of Student Affairs facilitates the meetings of the Nabikiyaati Committee.

Óta'í Bee Haz'áanii Yee Ádihodiilt'igho Yá Dahdinibj'hígíí

Due Process

Bee hazáaniiK'egó atk'ee hooní áq

All major policy violations are handled according to the Violation Consequences Chart in this section. Students are afforded due process when a school policy violation occurs. The Dean of Student Affairs is responsible for handling major violation matters in conjunction with the student, parents/guardian, school officials and others.

Hearing Process

The Hearing will be conducted by Nabikiyaati Committee and facilitated by the Dean of Student Affairs. The following procedures will be followed in cases of major violations where a student may be subject to the penalties of suspension and/or expulsion:

1. Written notice of the charge is sent to parent/guardian(s) by certified mail or contacted by a phone call within a reasonable period of time prior to hearing.
2. Parent/Guardian(s) who choose not to attend waive privileges of participating in the meeting and may relinquish further appeal opportunities.
3. The Discipline Hearing is a closed meeting and any questions or concerns regarding the process will be directed to the Dean of Student Affairs. The student has a right to legal representation; 48 hours' notification must be provided to both parties before the scheduled hearing. The school must be notified of any potential witnesses.
4. In an emergency situation, the school official may impose disciplinary action not to exceed a temporary suspension.
5. The staff member making the violation charge will describe the incident to the committee. If he/she is not available, his/her report will be read to the committee.
6. The student and/or parent/guardian(s) will present his/her explanation to the charge(s). The student will be given the opportunity to present evidence and/or witnesses on his/her behalf.
7. The disciplinary committee will be given an opportunity to ask questions of the student.
8. Parent/Guardian(s) will be offered the opportunity to ask questions and to speak on behalf of his/her student.
9. The witnesses to the violation will describe the incident to the committee and be dismissed before the Disciplinary Committee deliberates.
10. After the parent/guardian and student have presented their views and have been excused, the committee will carefully consider the issues before them. The Dean of Student Affairs will notify the student and their parent/guardian(s) of the committee's decision within 24 hours.
11. If there is dissatisfaction with the committee decision, a written appeal can be made to the Dean of Instruction within three (3) school days.
12. If there is dissatisfaction with the Dean's decision, a written appeal can be made to the Head of School within three (3) school days.

Procedure for Dismissal

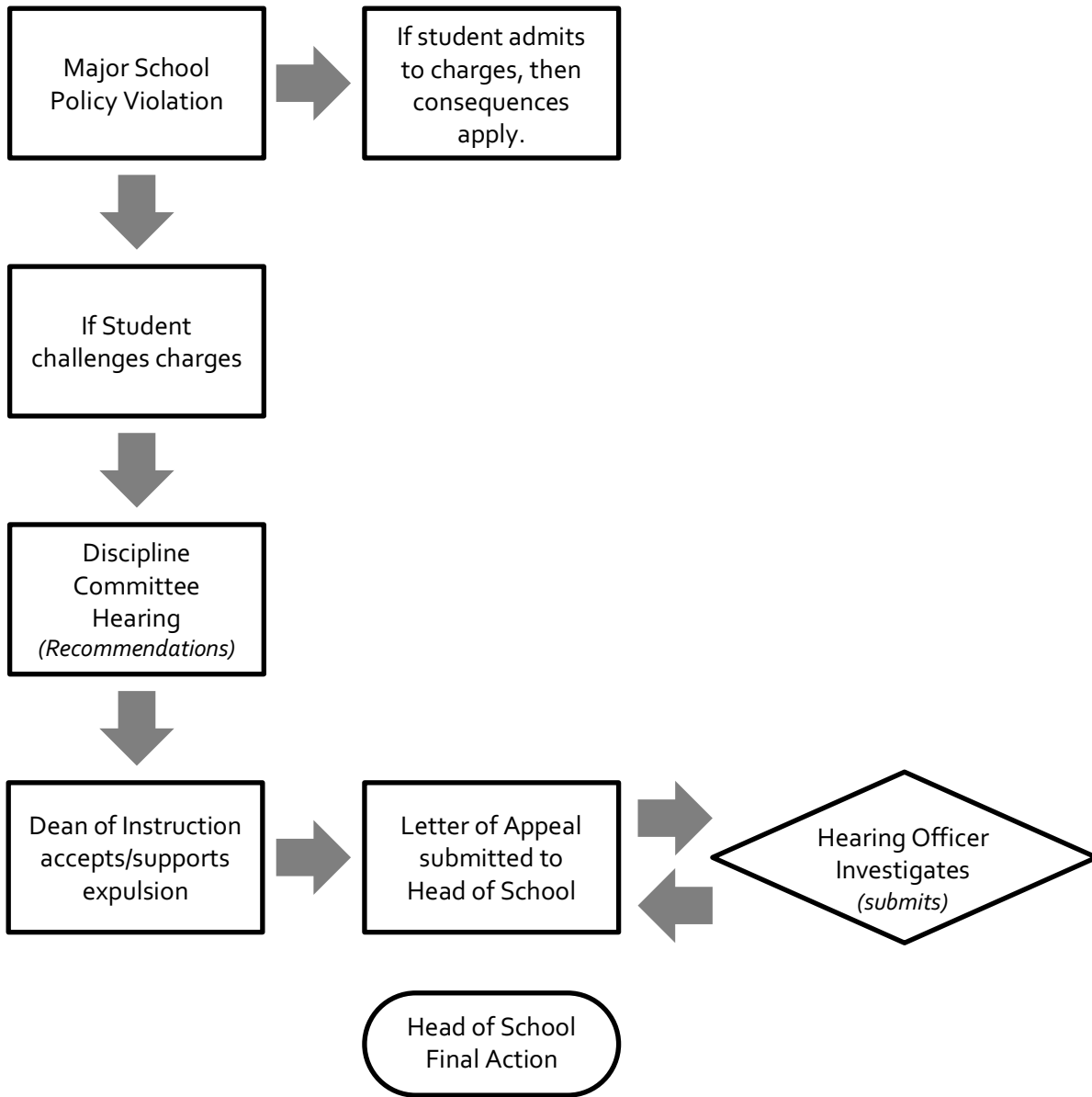
Óita'í ádaqah dahool'aahgo díí bik'ehgo ats'ánált'eeh

The student, parent(s)/guardian(s) may appeal the recommendation for expulsion by writing a formal letter to the Head of School within three (3) school days of the Dean of Instruction's recommendation.

When deemed necessary, the Head of School may appoint a hearing officer for further investigation. The Hearing Officer shall consider all relevant evidence and make a recommendation to the Head of School. This determination will be binding upon the Head of School and student.

The Head of School has three (3) school days to make a determination on the recommendation for expulsion.

Procedures for Dismissal:



APPENDIX

2018-19 ACADEMIC YEAR CALENDAR

Aug 13	First Day of School
Aug 24	AM Classes (In-Service PM)
Aug 31	NPS Parent Day <u>NO BUS RUNS</u>
Sep 03	Labor Day
Sep 09	IEC Meeting
Sep 14	AM Classes (In-Service PM)
Sep 26	Mountain Day
Oct 08	PM Classes (No In-Service)
Oct 12	AM Classes (In-Service PM)
Oct 12	End of 1st Quarter
Oct 14	IEC Meeting
Oct 26	AM Classes/Parent Teacher Conf <u>NO BUS RUN</u>
Nov 09	AM Classes (In-Service PM)
Nov 11	IEC Meeting
Nov 12	Veteran's Day (1/2 Day) PM Classes
Nov 12-16	International Week
Nov 14	Unity Day/CAS/Collquial
Nov 17	Admissions Open House
Nov 19-23	Thanksgiving Break
Dec 09	IEC Meeting
Dec 14	AM Classes (In-Service PM)
Dec 18-20	Midterm Exams
Dec 21	End of 2nd Qtr / AM Classes <u>NO BUS RUNS</u>
Dec 24 – Jan 6	Winter Break
Jan 01	New Year's Day
Jan 07	Full Day In-Service
Jan 08	Students Report
Jan 13	IEC Meeting
Jan 21	MLK Holiday
Jan 30	Snow Day
Feb 08	AM Classes (In-Service PM)
Feb 10	IEC Meeting
Feb 15	Parent Teacher Conference <u>NO BUS RUNS</u>
Feb 18	President's Day
Mar 08	AM Classes (In-Service PM)
Mar 10	IEC Meeting
Mar 15	End of 3rd Qtr
Mar 15	IB Registration Fees Due
Mar 18-22	Spring Break
Apr 14	IEC Meeting
Apr 19	Good Friday
Apr 22	PM Classes (In-Service AM)
Apr 22	Hozho Nassha Week
Apr 26	Spring Open House/CAS/ATSÁ <u>NO BUS RUNS</u>
Apr 29 – May 17	IB Exams
May 01	Annual NPS Awards Ceremony
May 12	IEC Meeting
May 14-16	Final Exams Seniors
May 18	Graduation
May 21-23	Final Exams (9-11)
May 23	Last Day of School <u>NO BUS RUNS</u>

REGULAR DAILY SCHEDULE

Díí Íyisí Bik'ehgo T'áá ákwííjí ólta'

A modified block schedule consists of ninety (90) minutes of classroom instruction throughout the entire school year.

Class Schedule 2018-2019

MONDAY (90 Mins)		
1st Period	7:55 AM	9:25 AM
2nd Period	9:30 AM	11:00 AM
Lunch A	11:05 AM	11:40 AM
CP	11:45 AM	12:25 PM
CP	11:05 AM	11:45 AM
Lunch B	11:50 AM	12:25 PM
3rd Period	12:30 PM	2:00 PM
4th Period	2:05 PM	3:35 PM

THURSDAY (90 Mins)		
1st Period	7:55 AM	9:25 AM
2nd Period	9:30 AM	11:00 AM
LUNCH	11:00 AM	11:40 AM
3rd Period	11:45 AM	1:15 PM
4th Period	1:20 PM	2:50 PM
Flex/Mtgs/Assem	2:55 PM	3:35 PM

TUESDAY (90 Mins)		
5th Period	7:55 AM	9:25 AM
6th Period	9:30 AM	11:00 AM
Lunch A	11:05 AM	11:40 AM
CP	11:45 AM	12:25 PM
CP	11:05 AM	11:45 AM
Lunch B	11:50 AM	12:25 PM
7th Period	12:30 PM	2:00 PM
8th Period	2:05 PM	3:35 PM

FRIDAY (90 Mins)		
5th Period	7:55 AM	9:25 AM
6th Period	9:30 AM	11:00 AM
Lunch	11:00 AM	11:50 AM
7th Period	11:55 AM	1:25 PM
8th Period	1:30 PM	3:00 PM
CP	3:05 PM	3:35 PM

WEDNESDAY (40 Mins)		
1st Period	7:55 AM	8:35 AM
5th Period	8:40 AM	9:20 AM
2nd Period	9:25 AM	10:05 AM
6th Period	10:10 AM	10:50 AM
3rd Period	10:55 AM	11:35 AM
Lunch	11:35 AM	12:35 PM
7th Period	12:40 PM	1:20 PM
4th Period	1:25 PM	2:05 PM
8th Period	2:10 PM	2:50 PM

HALF DAY AM SCHEDULE (60 Mins)		
1st / 5th	7:55 AM	8:55 AM
2nd / 6th	9:00 AM	10:00 AM
3rd / 7th	10:05 AM	11:05 AM
4th / 8th	11:10 AM	12:10 PM

HALF DAY PM SCHEDULE (40 Mins)		
1st / 5th	12:45 PM	1:25 PM
2nd / 6th	1:30 PM	2:10 PM
3rd / 7th	2:15 PM	2:55 PM
4th / 8th	3:00 PM	3:40 PM

Daily Bus Run departs at 5:30 p.m. Monday through Thursday and at 4:00 on Fridays.

2 HOUR DELAY SCHEDULE

2 Hour Delay

1 st / 5 th Hour	9:55 am–11:05 am	70 min
Lunch A	11:10 am–11:45 am	35 min
2 nd / 6 th Hour	11:50 am–1:00 pm	70 min
2 nd / 6 th Hour	11:10 am–12:20 pm	70 min
Lunch B	12:25 pm–1:00 pm	35 min
3 rd / 7 th Hour	1:05 pm–2:15 pm	70 min
4 th / 8 th Hour	2:20 pm–3:40 pm	70 min

MID-TERM AND FINAL SCHEDULES (DEC)

Tues., Dec. 18 (45 min. classes)	Wed., Dec. 19 (90 min. classes)	Thurs., Dec. 20 (90 min. classes)	Fri., Dec. 21 (90 min. classes)
<i>Mid-Term Review</i>	<i>Mid-Term</i>	<i>Mid-Term</i>	<i>Mid-Term</i>
1 st Hour	College Prep Hour	College Prep Hour	7 th Hour
5 th Hour	1 st Hour	4 th Hour	8 th Hour
2 nd Hour	LUNCH	LUNCH	LUNCH
6 th Hour	2 nd Hour	5 th Hour	<i>Off-Campus</i>
LUNCH	3 rd Hour	6 th Hour	<i>Activity</i>
3 rd Hour		Hour	
7 th Hour			
4 th Hour			
8 th Hour			

FINAL EXAMINATION SCHEDULES

Due to the IB Exam test schedule, Final Examination schedules for May will be provided to all students during the Spring Semester. Fourth quarter grades will end one week prior to week of finals.

BEFORE AND AFTER SCHOOL SCHEDULES

7:00 am-8:00 pm Mon-Thurs 7:00 am -4:00 pm Fri	Open Library • Open to all students' daily
3:35-4:30 pm Mon/Tues/Thurs	Teacher Office Hours Immediate intervention and support for all students, including athletes and day students.
4:00 pm – 8:00 pm Mon-Thurs	After School Tutoring Program Open to all students daily. Tutors will be available for students who need help in certain areas.
4:00-5:00 pm Mondays	Freshman, Sophomore, Junior Academy • Freshman: ALL students will attend Freshman Academy in the Fall Semester. Freshman will then be assigned Academy in the Spring Semester depending on their academic performance. • Sophomores and Juniors will be assigned Academy periodically depending on their academic performance.
3:00-4:00 pm Wednesdays	All School Wellness Activities • Wellness Activities will be coordinated by each Residential Hall. • Day students will be assigned to participate in wellness activities. • All students, including athletes are required to participate
4:15-6:15 pm Mon-Thurs	Athletic Practice Athletes are excused from clubs/G&T meetings, etc. during this time.
3:45-5:15 pm (Day Students) 6:00-7:30 pm (Residential Students) Mon-Thurs SSC	Mandatory Study Hall • <u>Students below a 2.30 grade point average</u> are required to sign in and attend each day • Students with multiple F's will be required to attend until academic progress is made. • Students on the Dean's List and the Honor Roll will be exempt from study hall.. • Tutoring is available up to 8:00pm (passes are needed to leave study hall.)

TRANSPORTATION SCHEDULES

Daily Route Schedules

Buses depart NPS at 5:30 p.m. Monday through Thursday and at 4:00 p.m. on Fridays.

Shiprock Route

<u>A.M. Pick-up</u>	Pickup/Departure Time	<u>P.M. Drop-Off</u>	<u>Mon-Thurs</u>	<u>Fri</u>
Shiprock – City Market	6:45 a.m.	Harper Hill-7-2-11 Kirtland – Doc's Barbeque	5:35 p.m. 5:45 p.m.	4:06 p.m. 4:15 p.m.
Waterflow – Valley Trading	7:00 a.m.	Waterflow Post Office	6:00 p.m.	4:30 p.m.
Kirtland – Shell Gas Station Harper Hill 7-2-11	7:15 a.m. 7:20 a.m.	Shiprock – City Market	6:20 p.m.	4:40 p.m.

Note: On Fridays, students on the Daily Shiprock route will ride the Kayenta/Black Mesa bus.

Bloomfield/Aztec Route, if needed

<u>A.M. Pick-up</u>	Pickup/Departure Time	<u>P.M. Drop-Off</u>	<u>Mon-Thurs</u>	<u>Fri</u>
Bloomfield – Farmer's Market	6:50 a.m.	Bloomfield – Farmer's Market	6:00 p.m.	4:30 p.m.
Aztec – Conoco Station	7:10 a.m.	Aztec – Conoco Station	6:25 p.m.	*4:30 p.m

Note: On Fridays, students on the Daily Bloomfield route will ride the Torreon bus and students in Aztec will be transported separately.

Regular Bus Routes

THERE WILL BE NO BUS RUNS ON PARENT TEACHER CONFERENCE DAYS.

Note: The afternoon pick-up time is when the bus departs. Be at stop 10 minutes early.

ROUTE	Afternoon Departure & Pick-Up Times	Pick-Up & Drop Off Points	Friday Drop-Off Times
Black Mesa, AZ	3:00 PM	Shonto Marketplace – Hwy 160	6:55 PM
Kayenta, AZ	3:25 PM	Kayenta Chevron	6:30 PM
	3:55 PM	Dennehotso	6:00 PM
	4:15 PM	Mexican Water Store	5:40 PM
	4:25 PM	Red Mesa Express Store(Break)	5:25 PM
	4:40 PM	Teec Nos Box/TNP Trading Post	5:10 PM
	5:15 PM	Shiprock City Market/Caesar's Pizza	4:35 PM
Window Rock, AZ	3:00 PM	Window Rock Quality Inn	6:35 PM
	3:25 PM	T&R 76 Gas Station	6:00 PM
	3:45 PM	Tohatchi – Thiftway	5:40 PM
	4:05 PM	Naschitti Store	5:20 PM
	4:15 PM	Sheepspring Store	5:10 PM
	4:25 PM	Burnham Jct. / Shell Store (Break)	4:55 PM
	4:50 PM	Littlewater Store	4:45 PM
Chinle, AZ	3:00 PM	Chinle Tseyi Shopping Center (by King Dragon)	6:30 PM
	3:10 PM	Many Farms Fina Store	6:20 PM
	3:25 PM	Round Rock Chapter House	6:05 PM
	3:45 PM	Rock Point Giant Store	5:45 PM
	4:40 PM	Beclabito / Express Store (Break)	5:00 PM
Crownpoint, AZ	4:00 PM	Crownpoint Shopping Center	5:45 PM
	4:35 PM	Lake Valley/Tseya Store	5:00 PM
Torreón, NM	3:00PM	Red Mesa Express Store	6:40PM
Cuba, NM	3:30 PM	Cuba /Giant Conoco Store	6:10 PM
	4:00 PM	Counselor Post/Stop & Go Store	5:40 PM
	4:15 PM	Red Mesa Express Store (Break)	5:25 PM
	4:40 PM	Dzilnahodithle School by Cafeteria	5:05 PM

*** Please Note – When adverse Weather develops, tune in to KTNN 660 AM Radio, KNDN 960 AM Radio or KOB-TV – CH 12 for school delay info.**

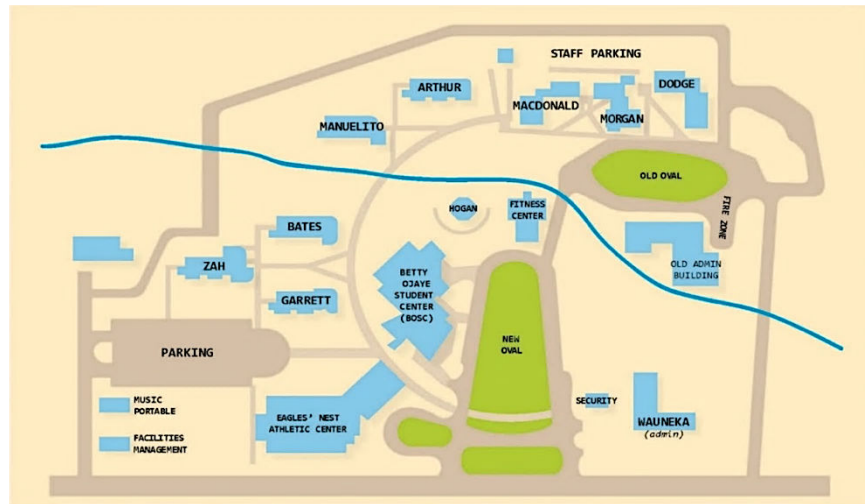
1/2 Day School Schedule

P.M. School and Early Release Schedule: For PM school day – School will begin at 1:00 PM. For early release day – Buses will leave NPS at 1:00 PM

Note: The morning pick-up times is when the bus departs. Be at bus stop 10 minutes early.

ROUTE	Afternoon Departure & Pick-Up Times	Pick-Up & Drop Off Points	Friday Drop-Off Times
Black Mesa, AZ	8:00 AM	Shonto Marketplace – Hwy 160	3:55 PM
Kayenta, AZ	8:25 AM	Kayenta Chevron	3:30 PM
	8:55 AM	Dennehotso	3:00 PM
	9:15 AM	Mexican Water Store	2:40 PM
	9:25 AM	Red Mesa Express Store (Break)	2:25 PM
	9:40 AM	TNP Trading Post, Teec Nos Pos	2:05 PM
	10:15 AM	Shiprock City Market/Caesars Pizza	1:35 PM
Window Rock, AZ	8:00 AM	Window Rock Quality Inn	3:35 PM
	8:25 AM	T&R 76 Gas Station	3:00 PM
	8:45 AM	Tohatchi – Thiftway	2:40 PM
	9:05 AM	Naschitti Store	2:20 PM
	9:15 AM	Sheepspring Store	2:10 PM
	9:25 AM	Burnham Jct./Shell Store (Break)	1:55 PM
Chinle, AZ	9:50 AM	Littlewater Store	1:45 PM
	8:00 AM	Chinle Tseyi Shopping Center by King Dragon	3:30 PM
	8:10 AM	Many Farms Fina Store	3:20 PM
	8:25 AM	Round Rock Chapter House	3:05 PM
	8:45 AM	Rock Point Giant Store	2:45 PM
Crownpoint, AZ	9:40 AM	Beclabito/Express Store (Break)	2:00 PM
	9:00 AM	Crownpoint Shopping Center	2:45 PM
Torreón, NM	9:35 AM	Lake Valley/Tseyá Store	1:55 PM
	8:00 AM	Red Mesa Express Store	3:40 PM
Cuba, NM	8:30 AM	Cuba - Giant Conoco Store	3:10 PM
	8:45 AM	Counselor Post/Stop & Go Store	2:40 PM
	9:15 AM	Red Mesa Express Store (Break)	2:25 PM
	9:35 AM	Dzilnahodithle School by Cafeteria	2:05 PM

CAMPUS MAP



Wauneka Building

A111	Business Manager
A112	Business Office
A113	Head of School
A114	Board Room
A116	Human Resources

Betty Ojaye Student Center (BOSC)

1st Floor

F122	Dean of Student Affairs
F163	Registrar
F165	Academic Counselor
F166	Office Space
F126	Science Classroom
F133	Science Classroom
F157	Library/Computer Lab
F142	McKenzie Health Center (SBHC)
F138	Academic Counselor
F105	Parent Center
F106	Dining/Student Lounge
F117	Dining/Student Lounge

2nd Floor

F203	
F204	BOSC Conference Room
F213	Navajo Language Classroom
F216	Computer Mezzanine
F209	Science Classroom

MacDonald Hall

Lower Level

M121	Student Recreation Center
M120	Dean of Student Life
M221	Social Studies Classroom
M220	Student Support Specialist
M254	Social Studies Classroom

M255	Social Studies Classroom
------	--------------------------

2nd Floor

M320	Development Director
M321	Social Studies Classroom

Morgan Hall

1st Floor

G120	Student Success Center
G153	Morgan Kitchen
G159	Morgan Conference Room

2nd Floor

G220	Art/Design Classroom
G222	Math Classroom
G252	Math Classroom
G253	Math Classroom

Dodge Hall

Lower Level

D120	Fitness Classroom
D122	Spanish Classroom
D154	Computer Science Classroom

1st Floor

D202	Open
D222	Dean of Instruction
D221	IB Coordinator/Asst. Dean
D225	Spanish Classroom
D254	Navajo Language Classroom
D255	English Classroom

2nd Floor

D321	English Classroom
D323	English Classroom

Dormitories

(Females)	Garrett Hall
(Females)	Zah Hall
(Females)	Bates Hall
(Males)	Manuelito Hall
(Males)	Arthur Hall

Eagles' Nest Athletic Center

Eagle's	
Nest/New Gym	
Old Gym	

Portable Buildings

1491	Music Classroom
1492	Facilities

Fitness Center

BLDG 31	Fitness Center
---------	----------------